

# ***Towards Our Greater Sydney 2056 and District Plan Discussion Drafts:***

## **West District Briefing**

# West District Commissioner

**Sean O'Toole**

TSW

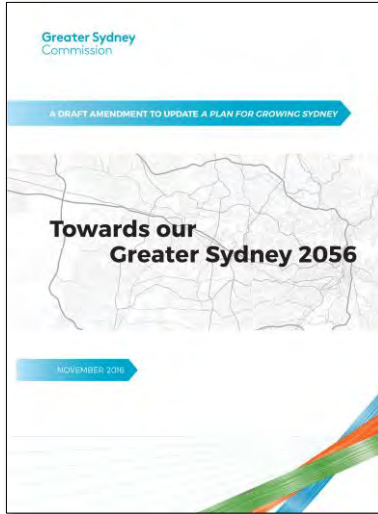
# The Commission



# Introduction to West District Plan

- What we heard
- Key statistics

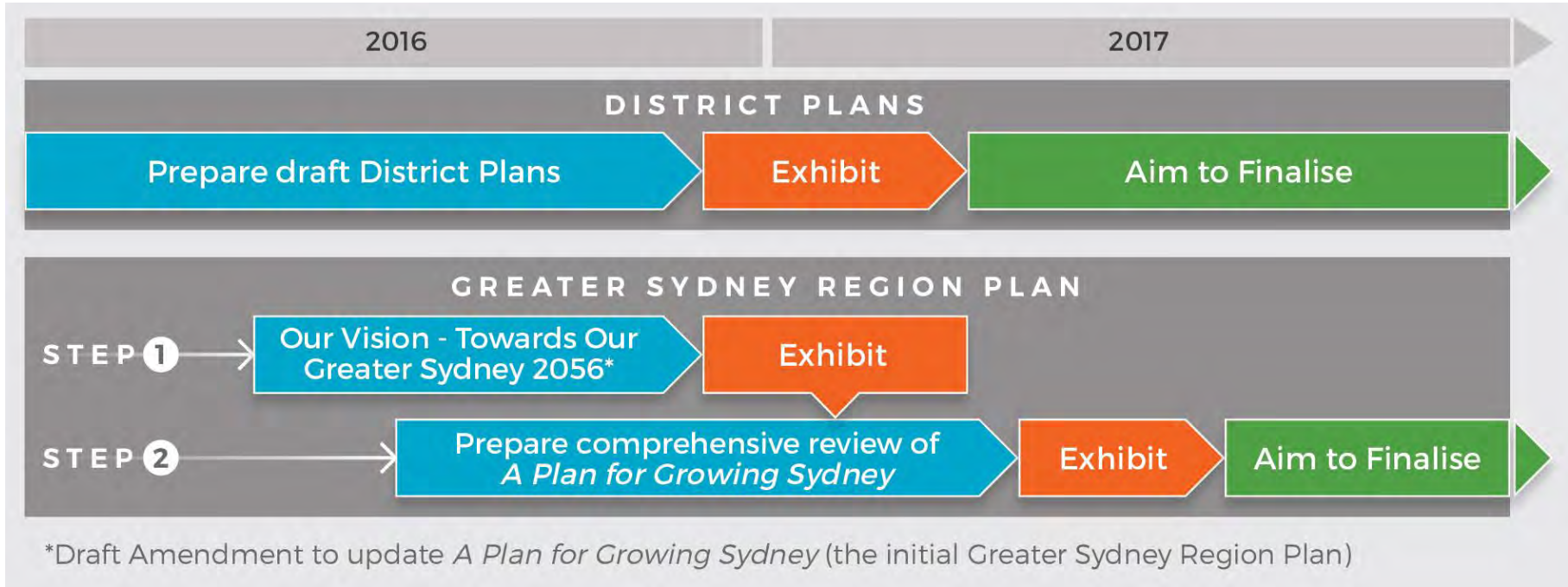
# Our drafts



# The Greater Sydney Region



# Engagement



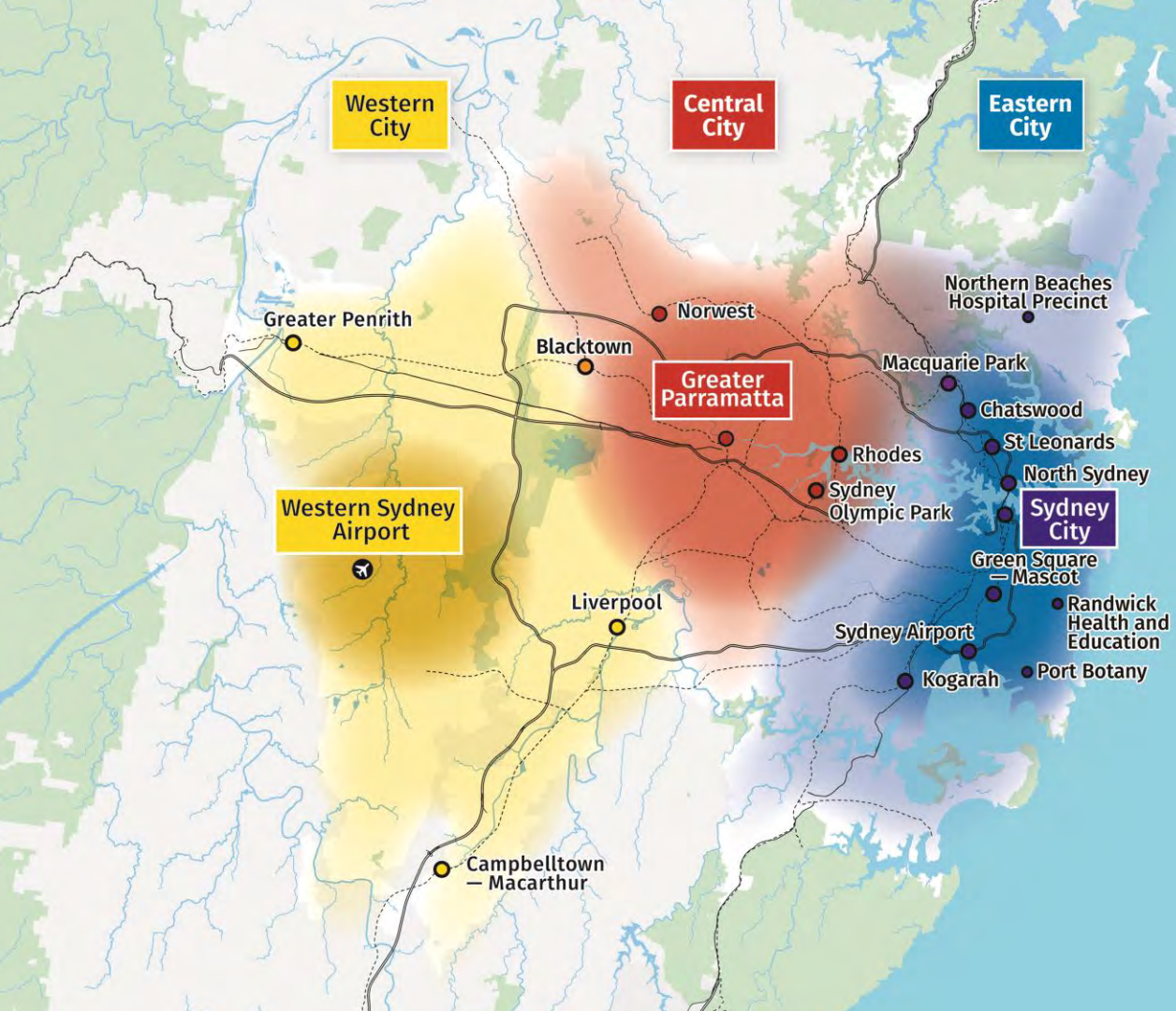
Text your questions to 0417 987 179



# District Plans



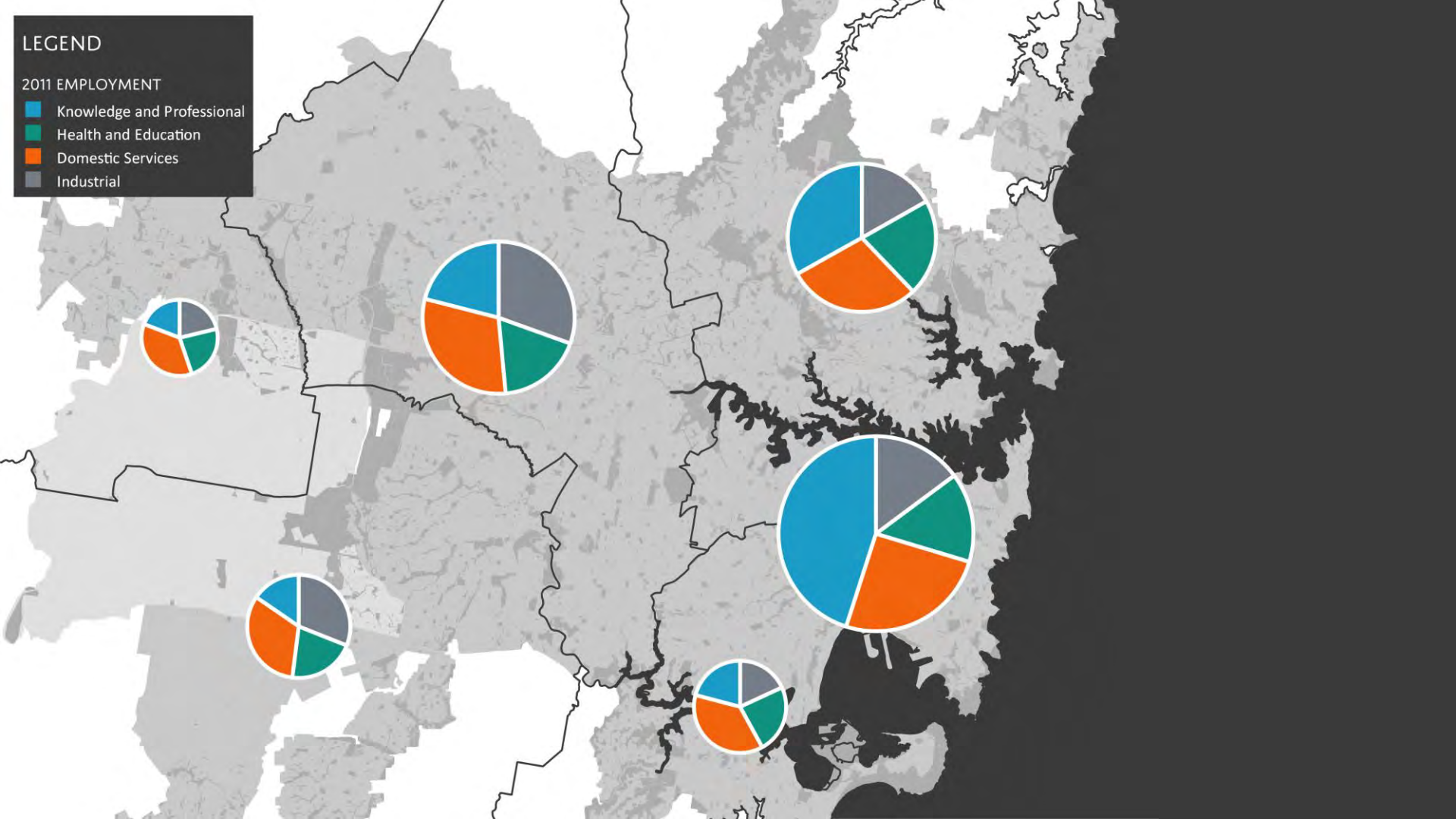




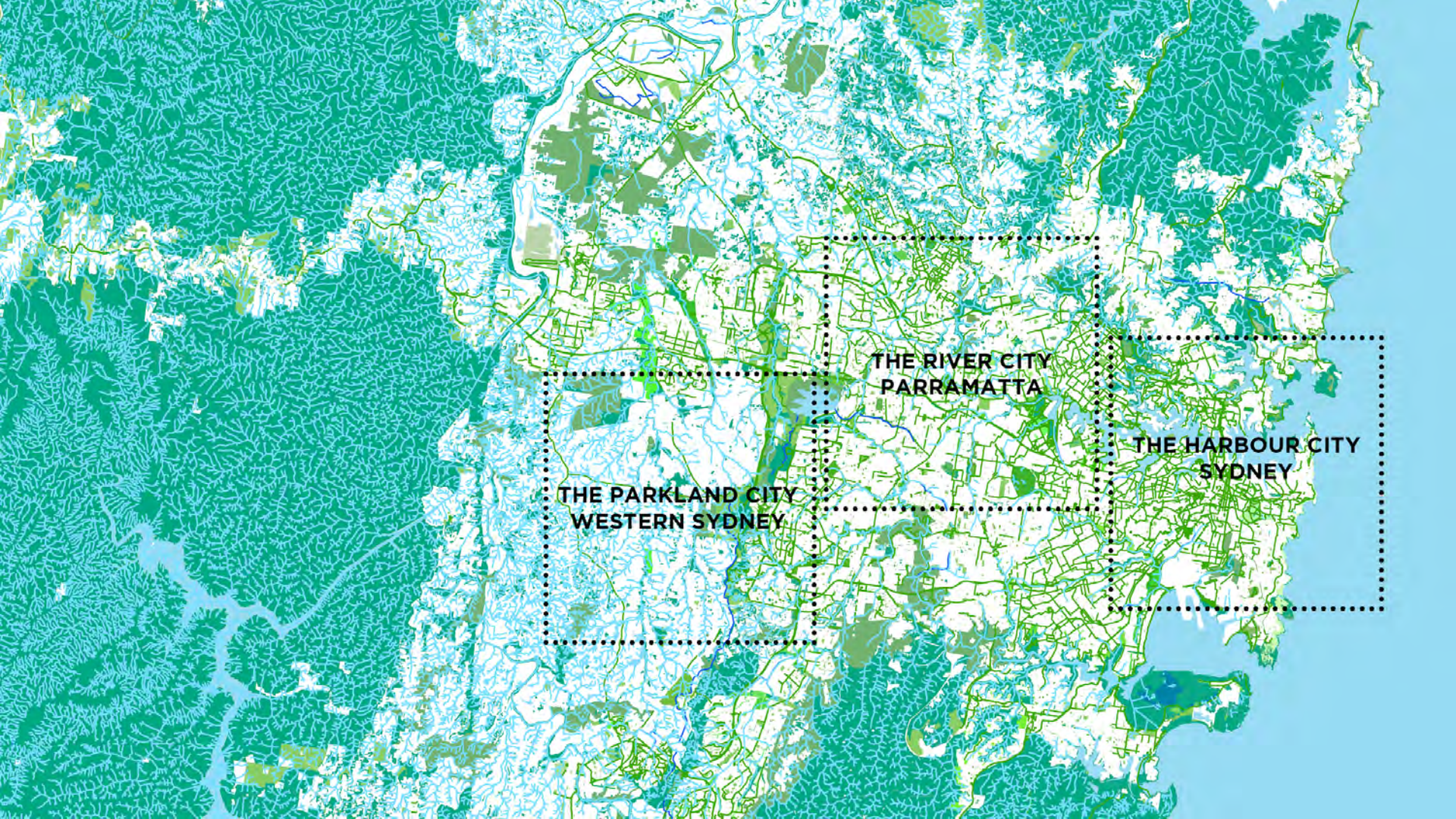
## LEGEND

### 2011 EMPLOYMENT

- Knowledge and Professional
- Health and Education
- Domestic Services
- Industrial







THE PARKLAND CITY  
WESTERN SYDNEY

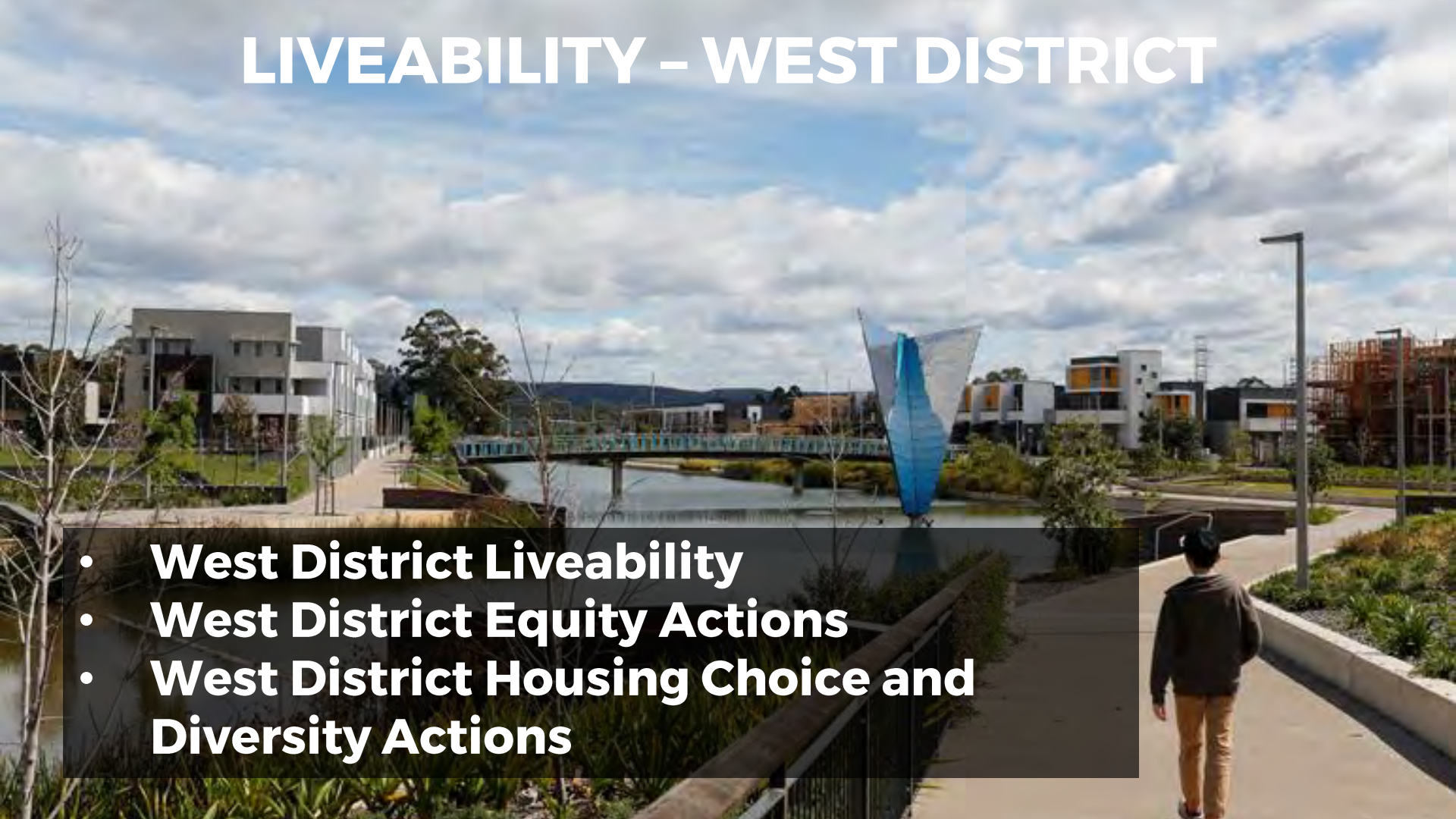
THE RIVER CITY  
PARRAMATTA

THE HARBOUR CITY  
SYDNEY



# LIVEABILITY – WEST DISTRICT

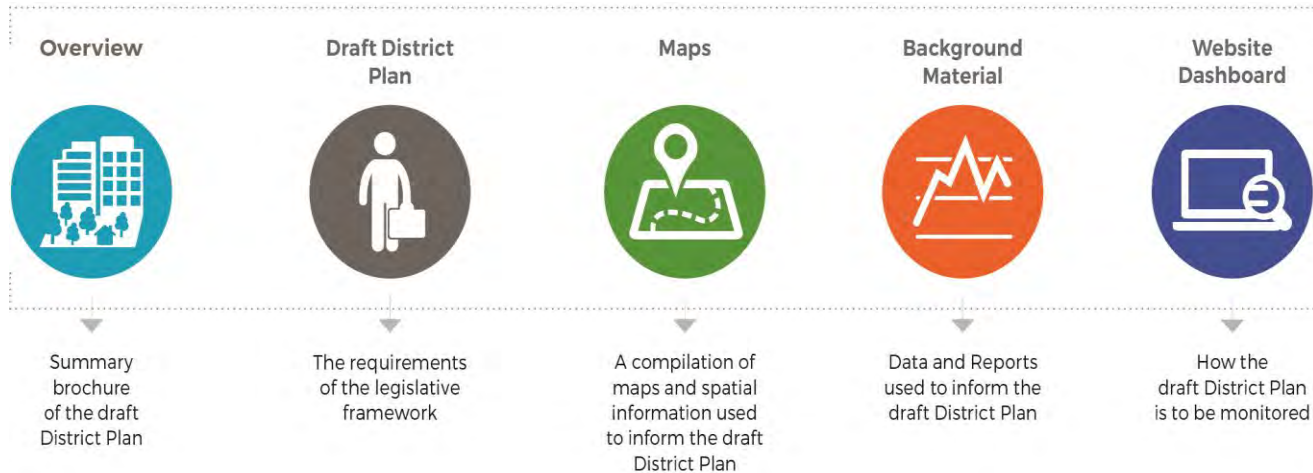
- **West District Liveability**
- **West District Equity Actions**
- **West District Housing Choice and Diversity Actions**



# Chief Executive Officer

**Sarah Hill**

# District Plans



## SEPARATE DOCUMENT

Our Vision  
Towards our  
Greater Sydney  
**2056**

A draft  
amendment to  
update *A Plan for  
Growing Sydney*



# Priorities and actions



Existing  
actions



Our actions



New  
collaborations



NSW  
Government  
actions

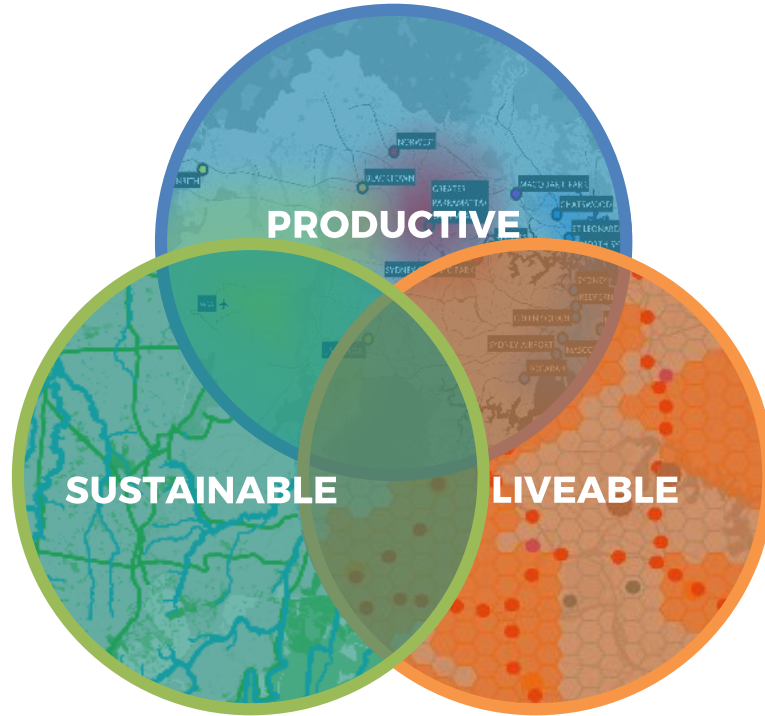


Planning  
Priorities



Collaboration  
areas

# The big issues



# Productivity

- Centres and jobs targets
- 30-minute city
- Employment and urban services lands



# Sustainability

- Blue and Green Grid
- Protecting the Metropolitan Rural Area
- Urban efficiency and resilience

# Liveability

- 5 year and 20 year housing targets
- Affordable Rental Housing Target
- Creating great places

# Draft District Plan status

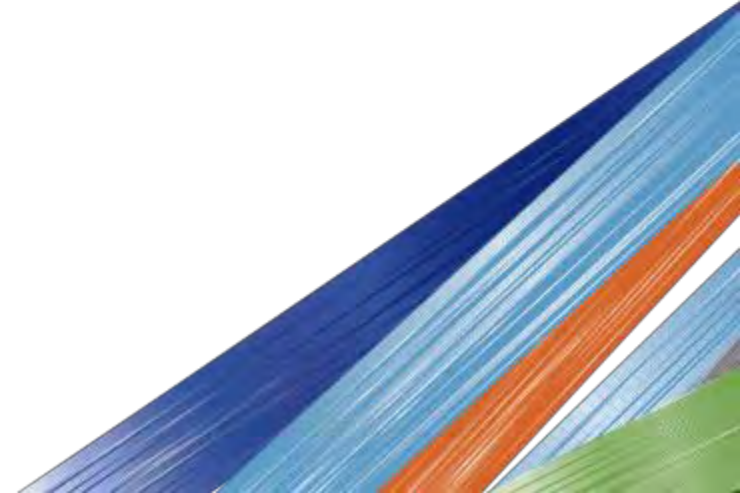
Two key roles:

- Inform Local Environment Plans (once final)
- Consideration for planning proposals (draft)

APfGS Amendment – no statutory weight



**WHERE TO FROM HERE?**



# Get involved

 /greatersydneycommission

 #greatersydney

 /greatersydneycommission

 /greater-sydney-commission

 [www.greater.sydney](http://www.greater.sydney)

[engagement@gsc.nsw.gov.au](mailto:engagement@gsc.nsw.gov.au)

1800 617 681



# PRODUCTIVITY – GREATER SYDNEY

