

# ***Towards Our Greater Sydney 2056 and District Plan Discussion Drafts:***

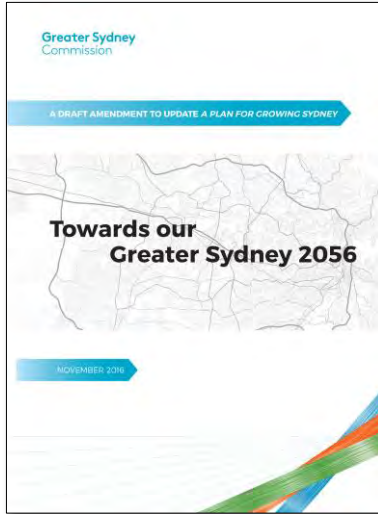
## **Strategic Partners Briefing**

**Chief Commissioner**

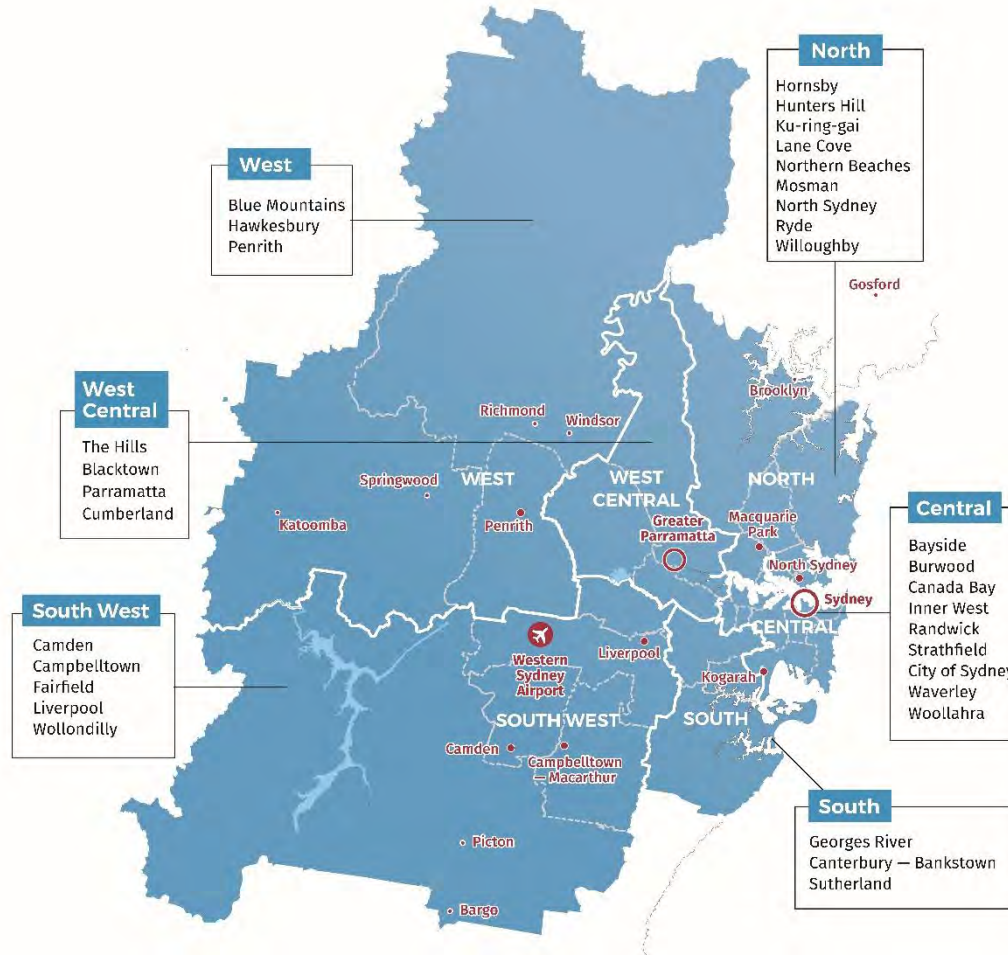
**Lucy Hughes Turnbull AO**



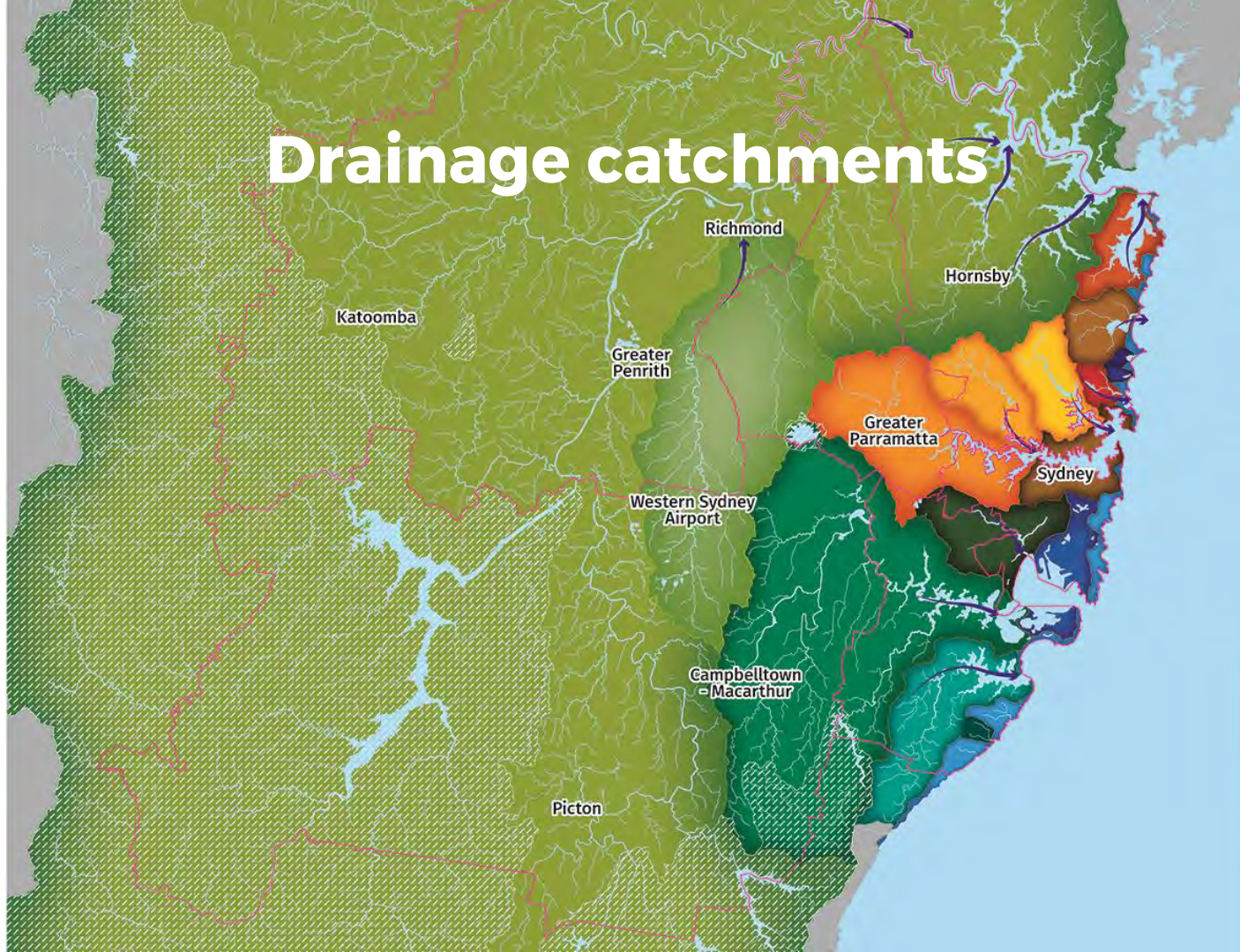
# Our drafts



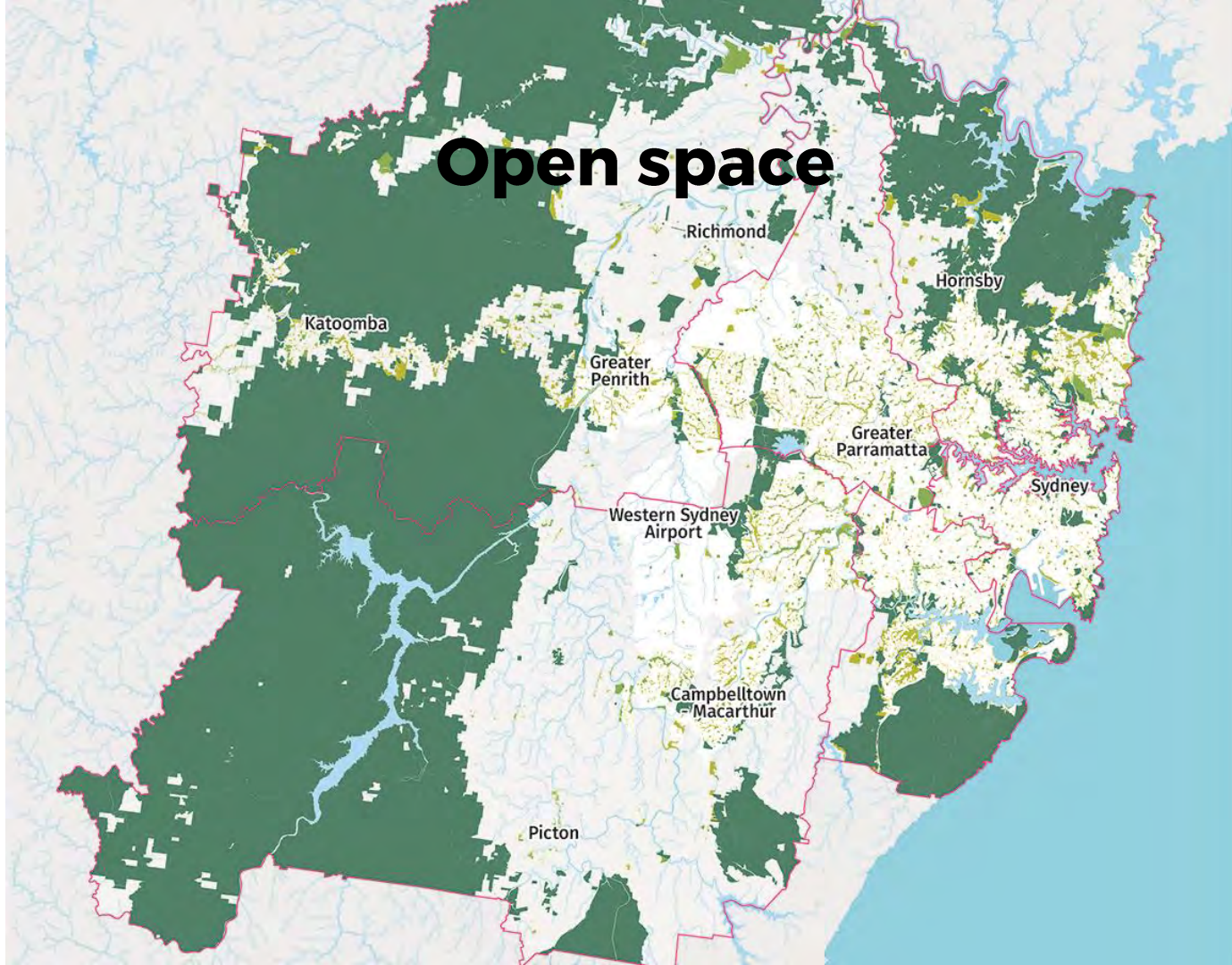
# The Greater Sydney Region



# Drainage catchments

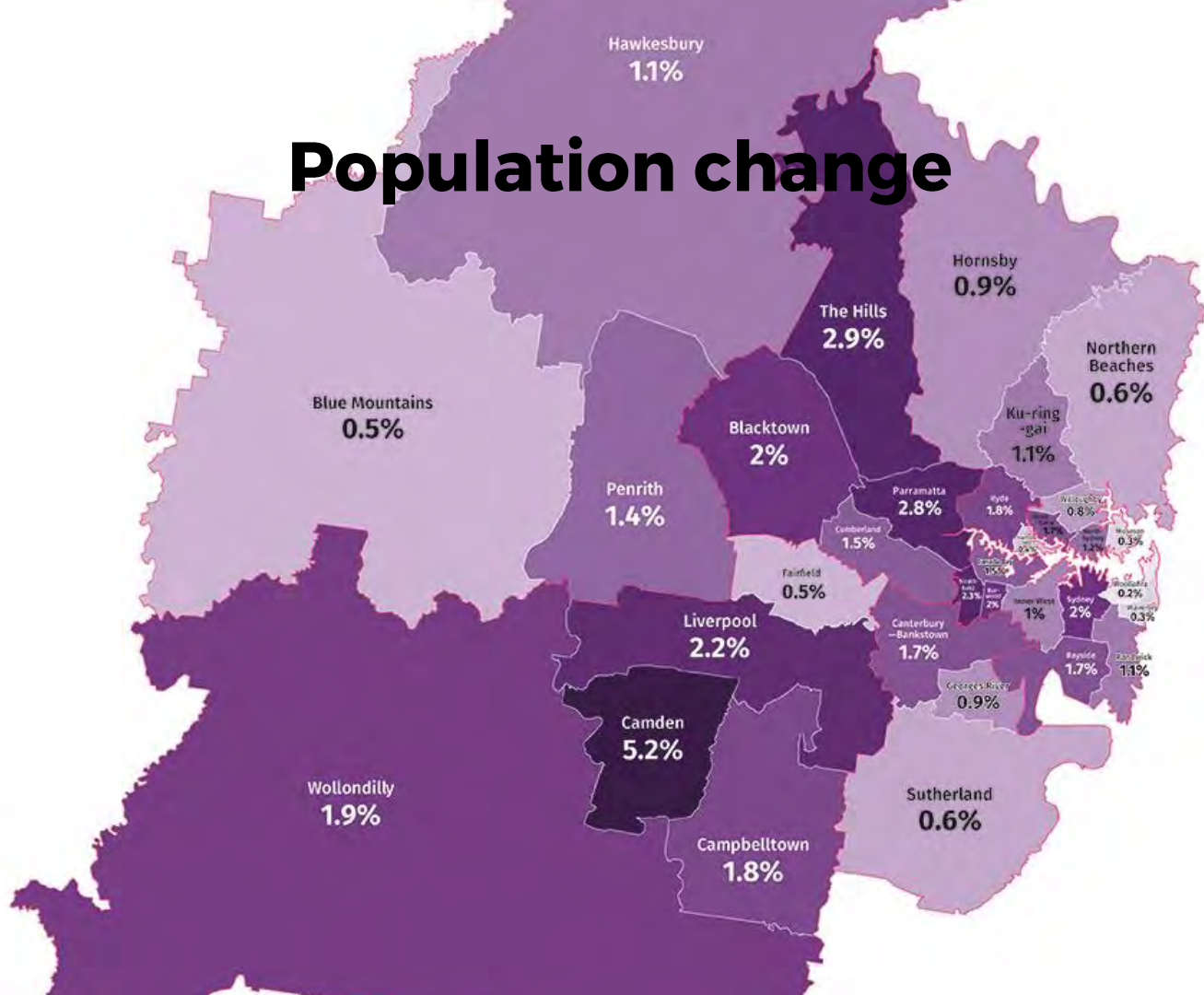


# Open space

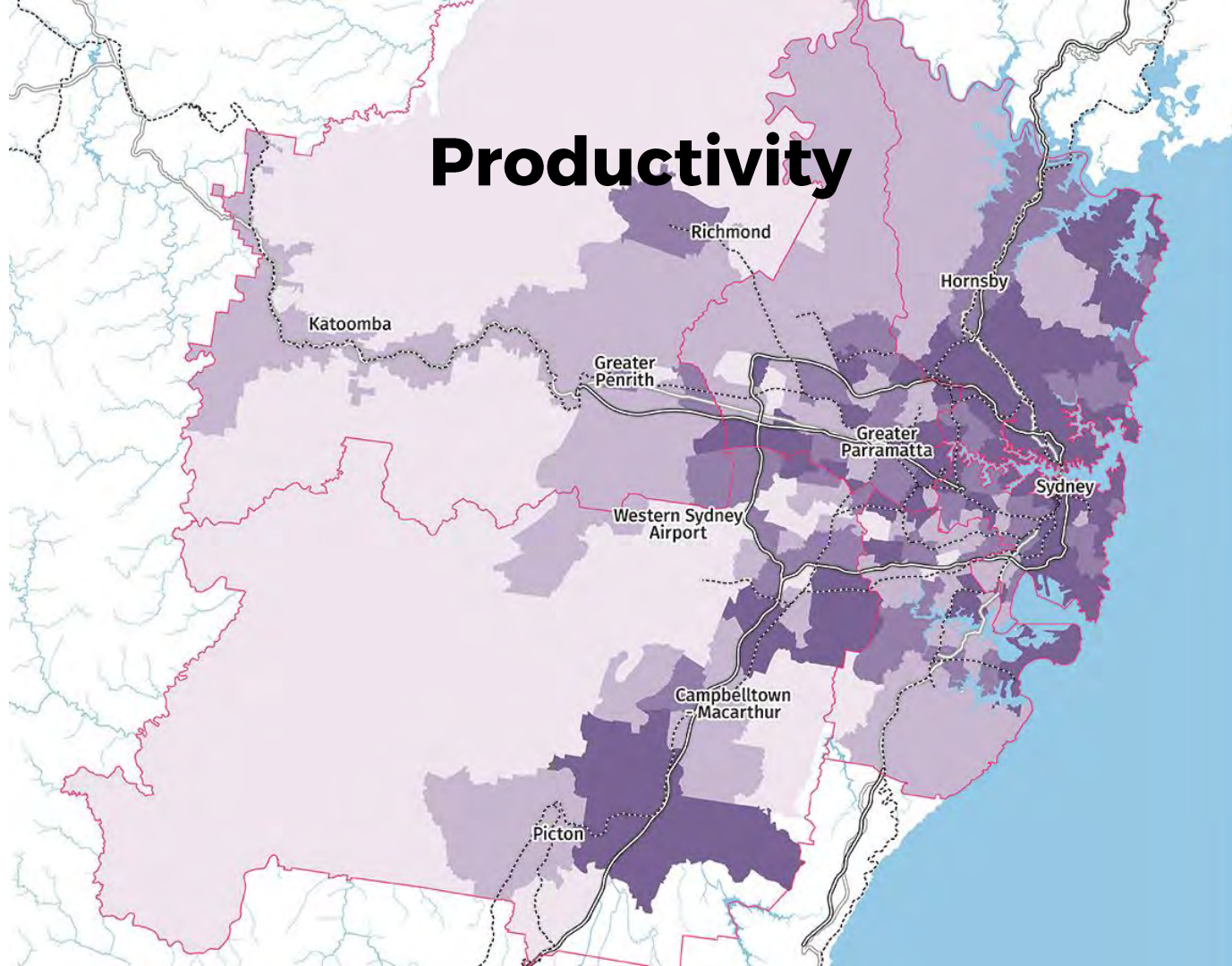


**Population change**

LGA	Population Change (%)
Hawkesbury	1.1%
The Hills	2.9%
Hornsby	0.9%
Northern Beaches	0.6%
Kuring-gai	1.1%
Parramatta	2.8%
Ryde	1.8%
Newcastle	0.8%
Maitland	0.3%
Sydney	2%
Bayside	1.7%
Georges River	0.9%
Sutherland	0.6%
Campbelltown	1.8%
Camden	5.2%
Liverpool	2.2%
Fairfield	0.5%
Canterbury-Bankstown	1.7%
Blacktown	2%
Penrith	1.4%
Blue Mountains	0.5%
Wollondilly	1.9%



# Productivity



# Greater Sydney Commissioners

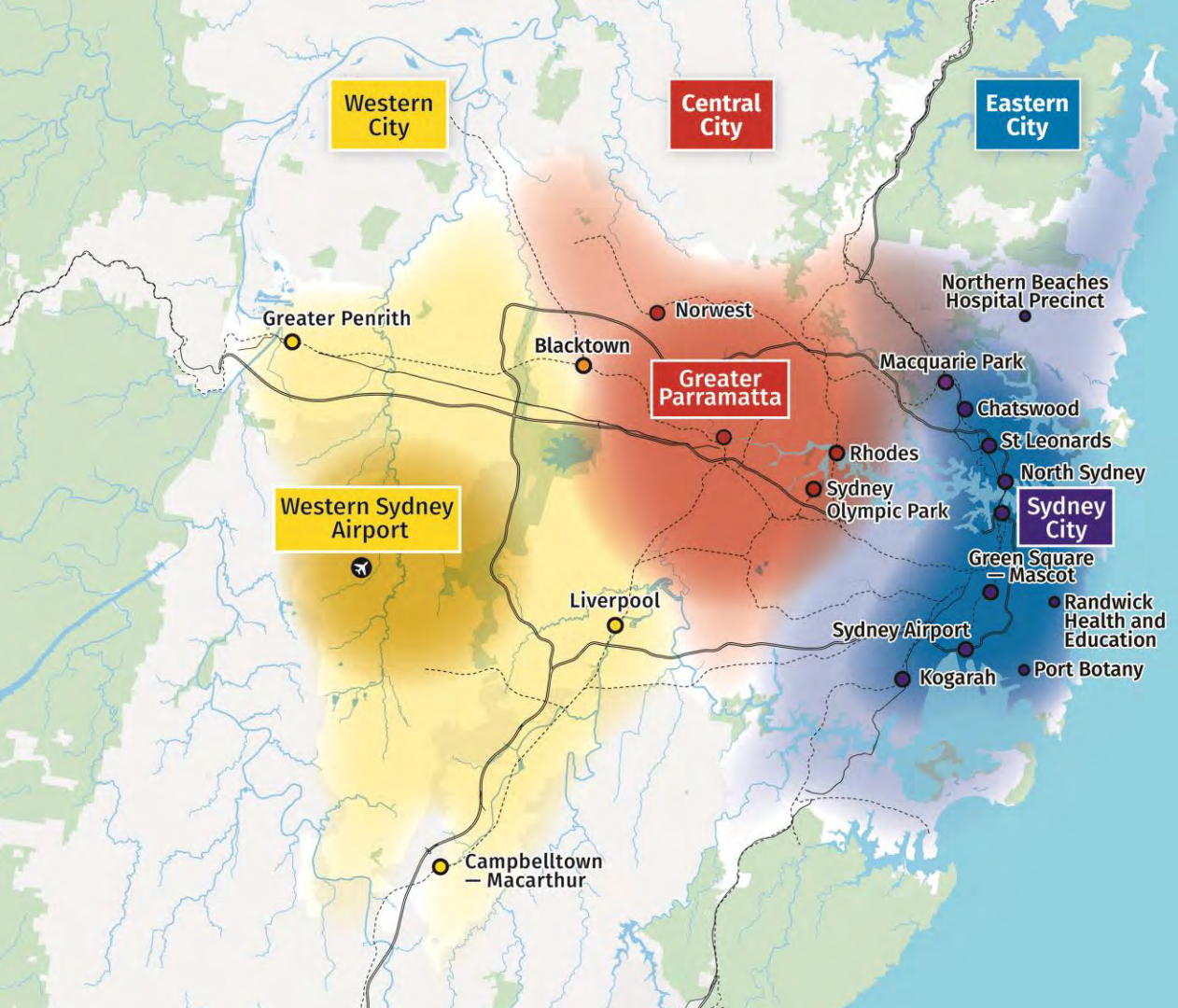
**Deputy Chief & Economic Commissioner -  
Geoff Roberts**

**Environment Commissioner -  
Roderick Simpson**

**Social Commissioner -  
Heather Nesbitt**

# Productivity

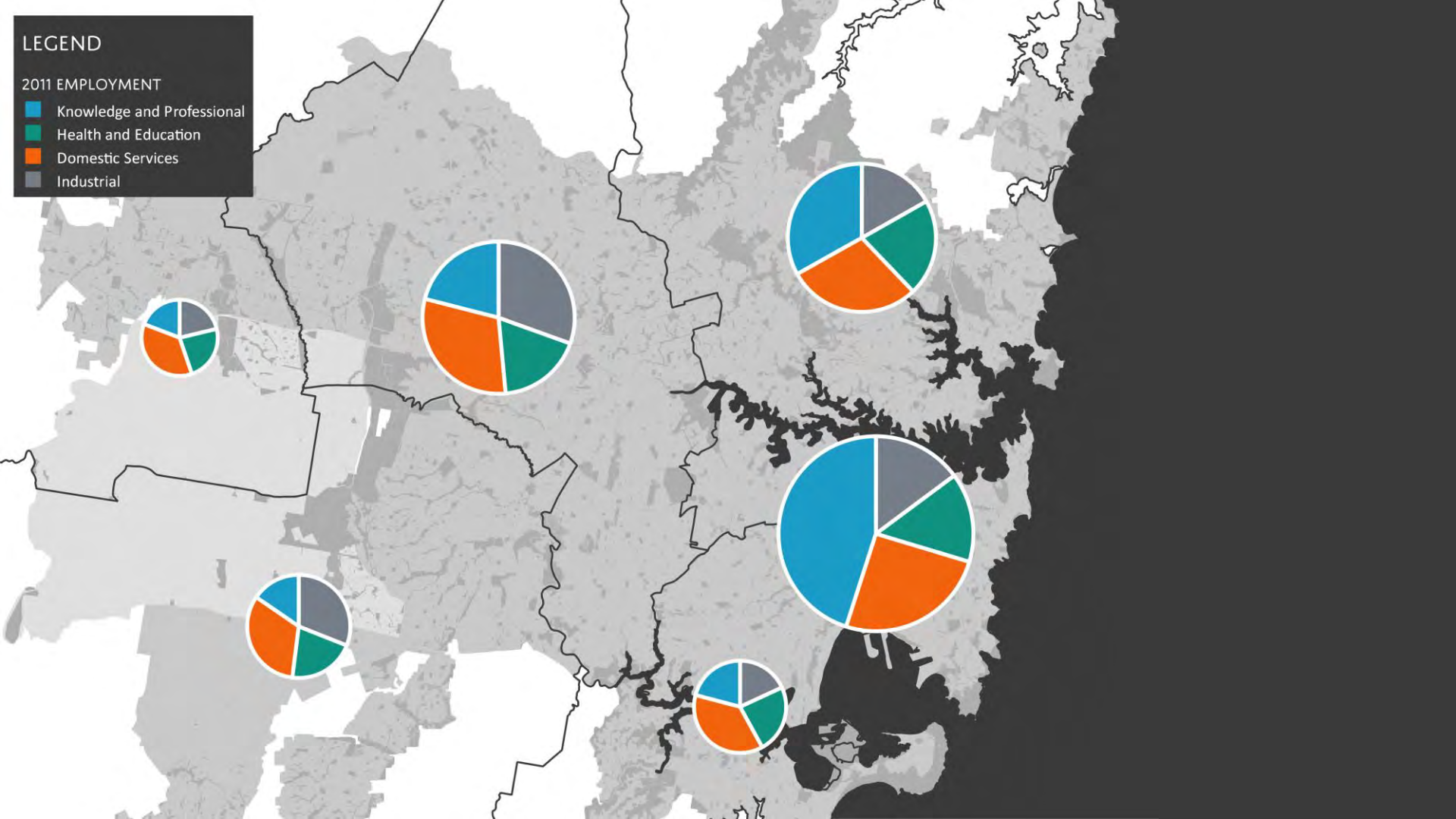
**Deputy Chief & Economic  
Commissioner  
Geoff Roberts**



## LEGEND

### 2011 EMPLOYMENT

- Knowledge and Professional
- Health and Education
- Domestic Services
- Industrial



# Sustainability

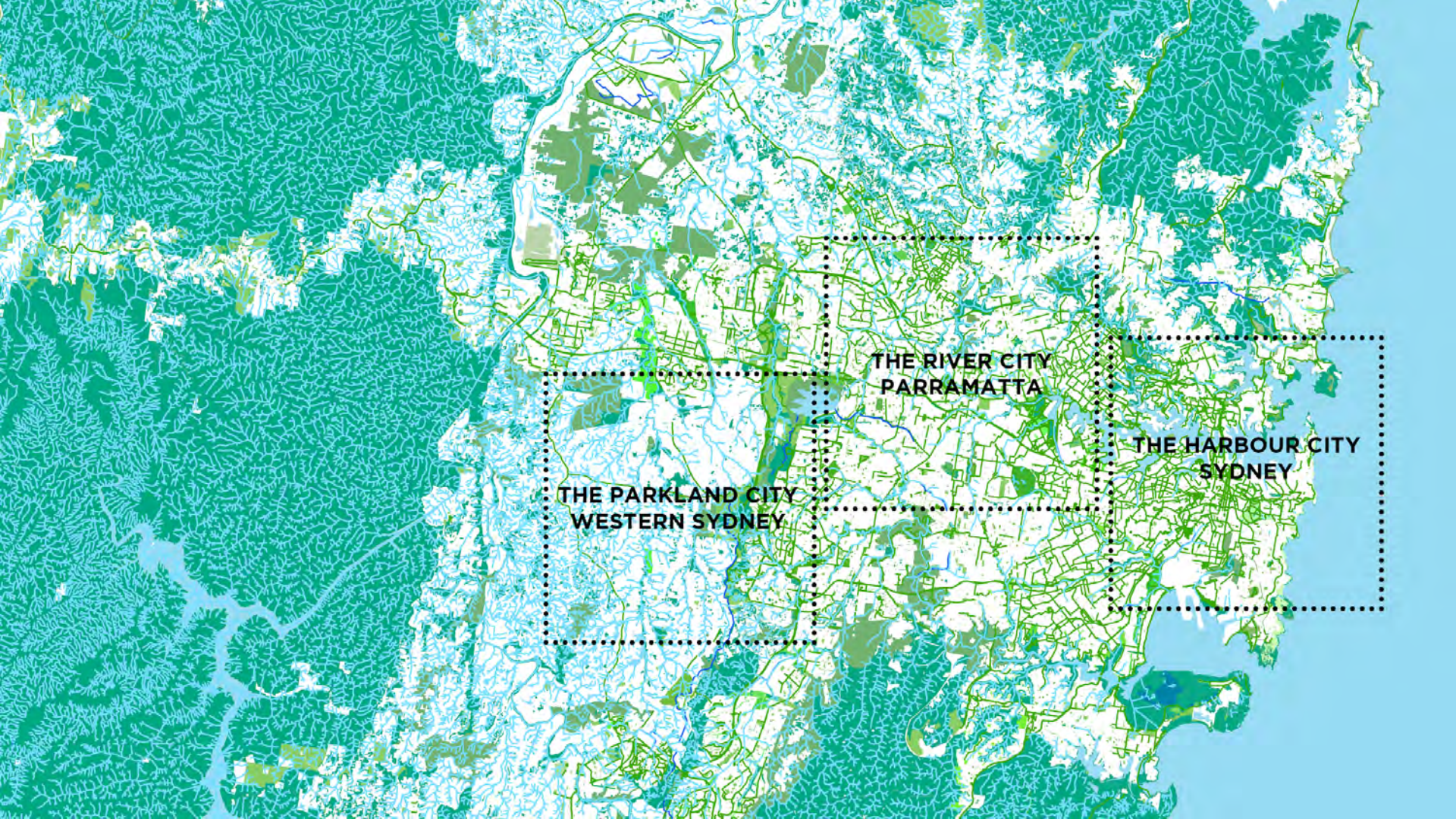
**Environment Commissioner  
Roderick Simpson**



# PIMELIA WESTERN SYDNEY PARKLANDS

PHOTO MCGREGOR COXALL / SIMON WOOD





THE RIVER CITY  
PARRAMATTA

THE PARKLAND CITY  
WESTERN SYDNEY

THE HARBOUR CITY  
SYDNEY

# Liveability

**Social Commissioner  
Heather Nesbitt**





# Chief Executive Officer

**Sarah Hill**

# District Plans



## SEPARATE DOCUMENT

Our Vision  
Towards our  
Greater Sydney  
**2056**

A draft  
amendment to  
update *A Plan for  
Growing Sydney*

# Priorities and actions



Existing  
actions



Our actions



New  
collaborations



NSW  
Government  
actions

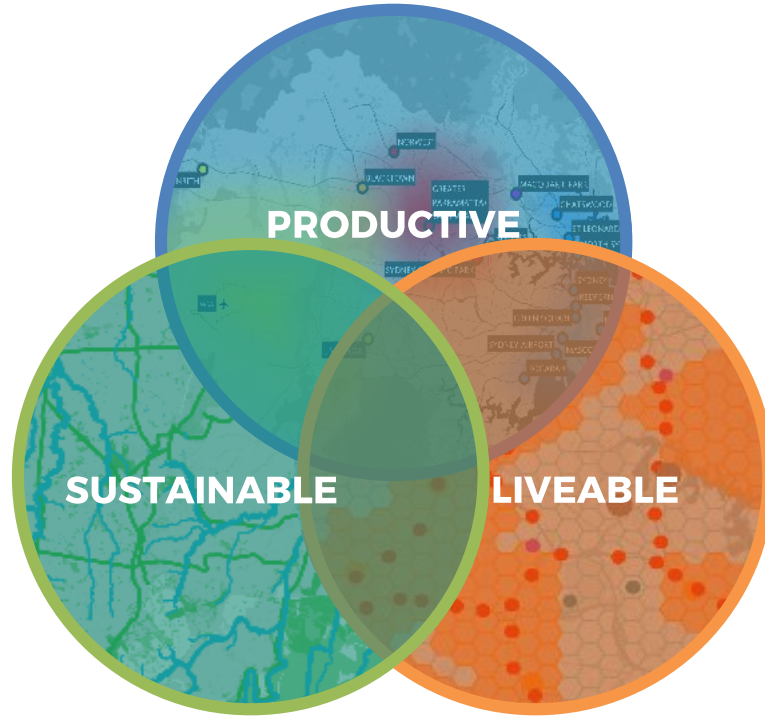


Planning  
Priorities



Collaboration  
areas

# The big issues



# Productivity

- Centres and jobs targets
- 30-minute city
- Employment and urban services lands

# Sustainability

- Blue and Green Grid
- Protecting the Metropolitan Rural Area
- Urban efficiency and resilience

# Liveability

- 5 year and 20 year housing targets
- Affordable Rental Housing Target
- Creating great places

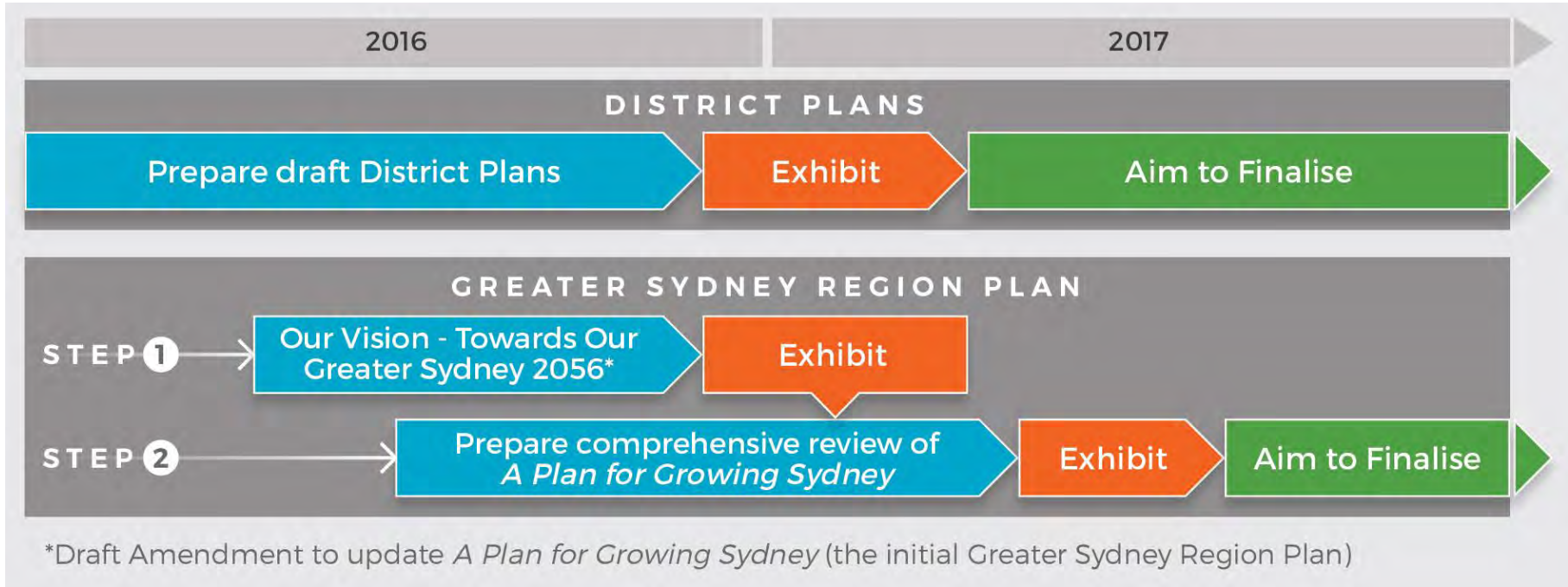
# **Draft District Plan status**

Two key roles:

- Inform Local Environment Plans (once final)
- Consideration for planning proposals (draft)

APfGS Amendment – no statutory weight

# Engagement



# Questions from the audience

# Get involved

 /greatersydneycommission

 #greatersydney

 /greatersydneycommission

 /greater-sydney-commission

 [www.greater.sydney](http://www.greater.sydney)

[engagement@gsc.nsw.gov.au](mailto:engagement@gsc.nsw.gov.au)

1800 617 681

