

Towards Our Greater Sydney 2056 and District Plan Discussion Drafts:

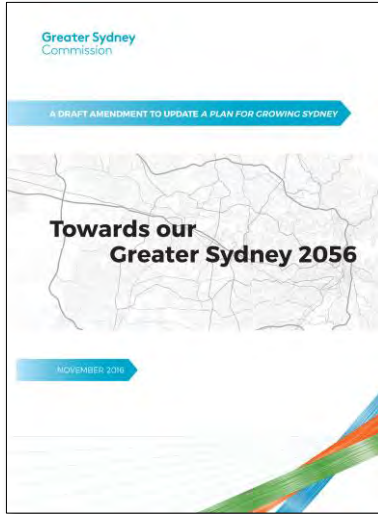
Central District Briefing

Acknowledgement of Country

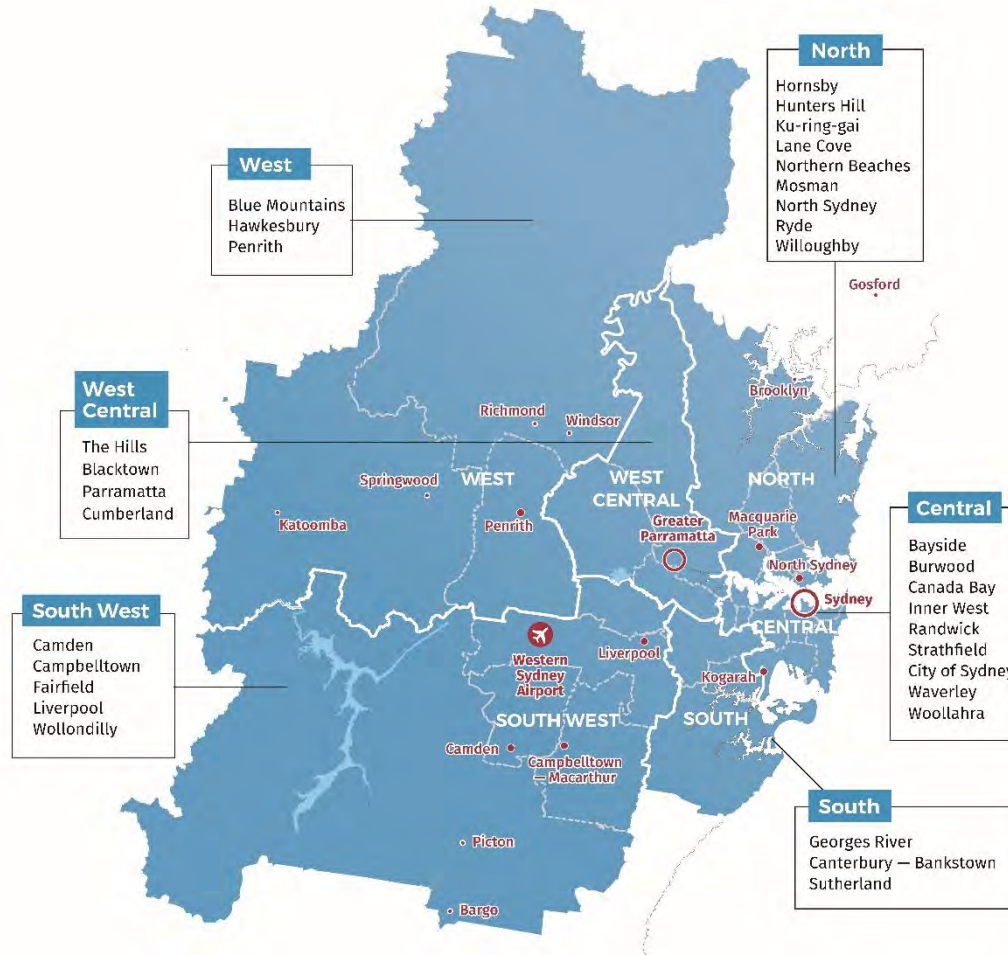
The Commission

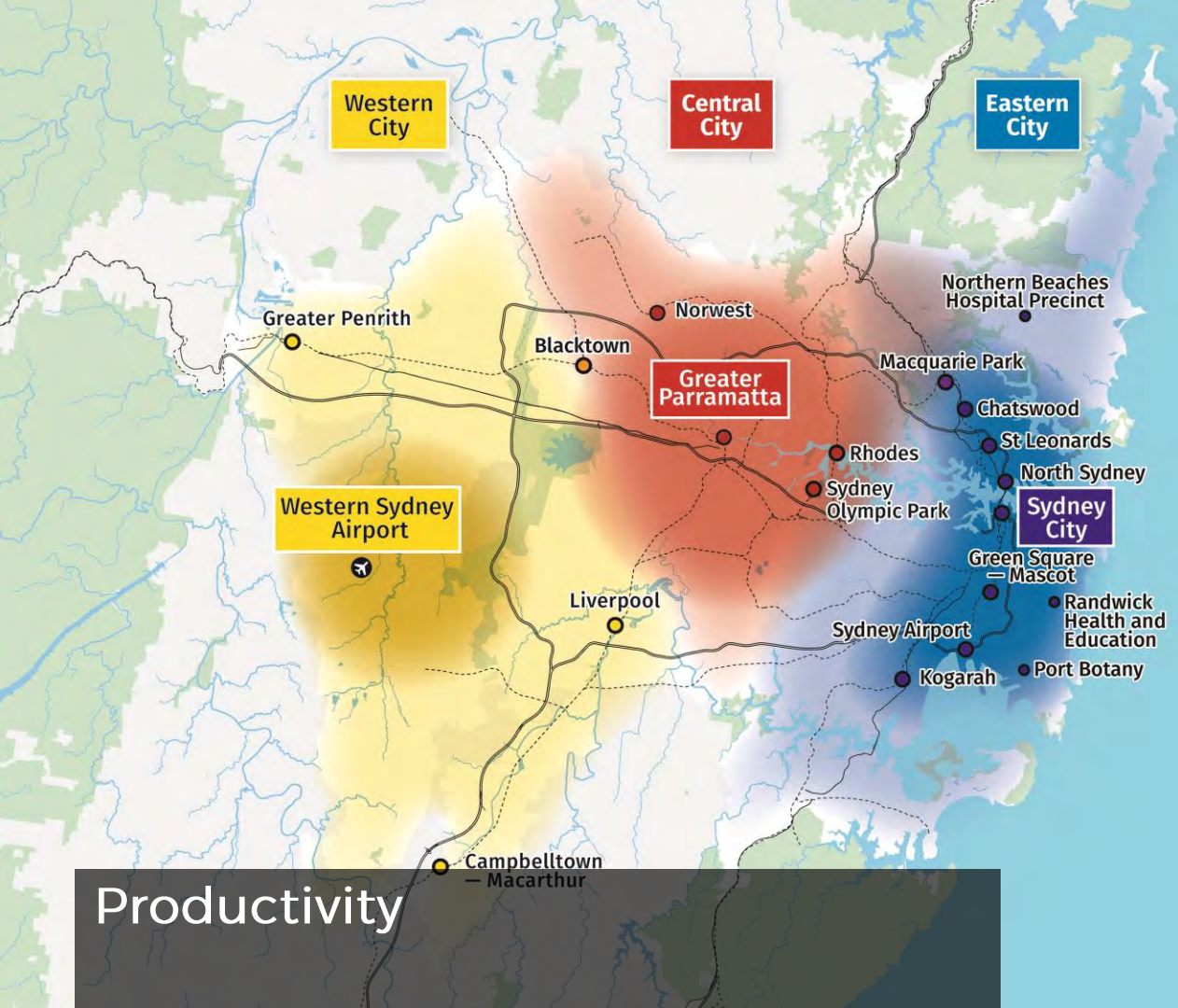


Our drafts



The Greater Sydney Region

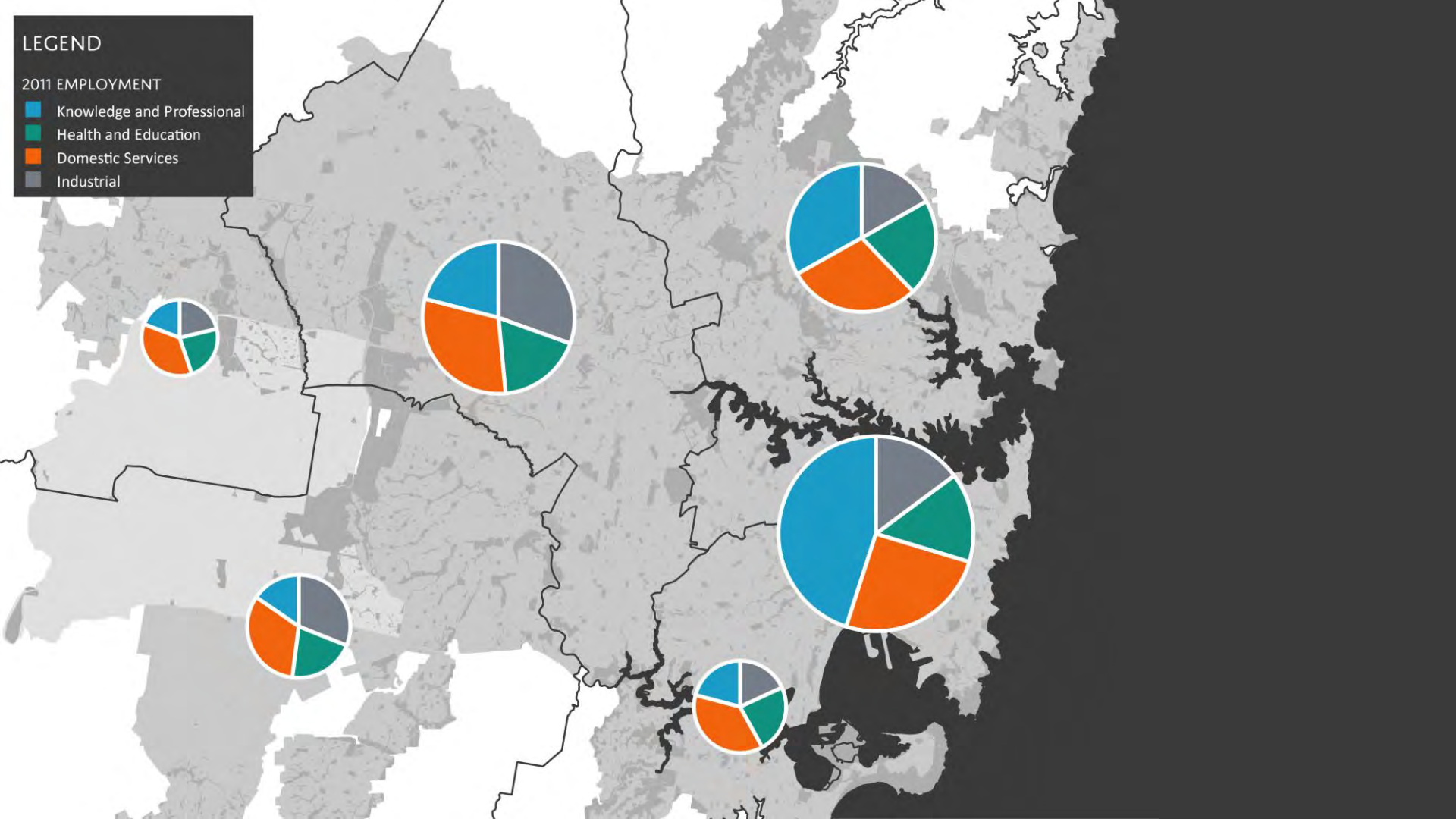


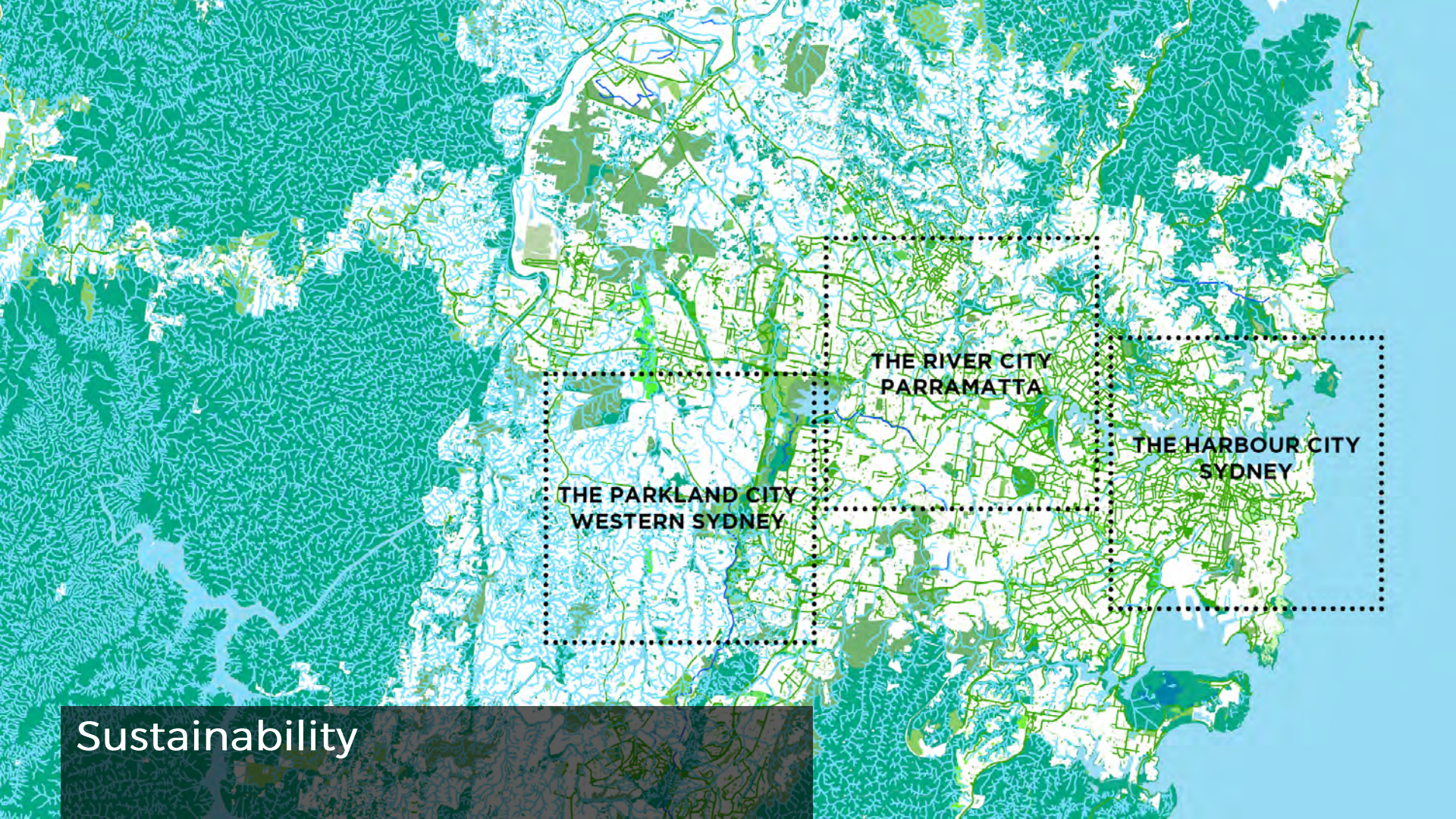


LEGEND

2011 EMPLOYMENT

- Knowledge and Professional
- Health and Education
- Domestic Services
- Industrial





THE RIVER CITY
PARRAMATTA

THE PARKLAND CITY
WESTERN SYDNEY

THE HARBOUR CITY
SYDNEY

Sustainability

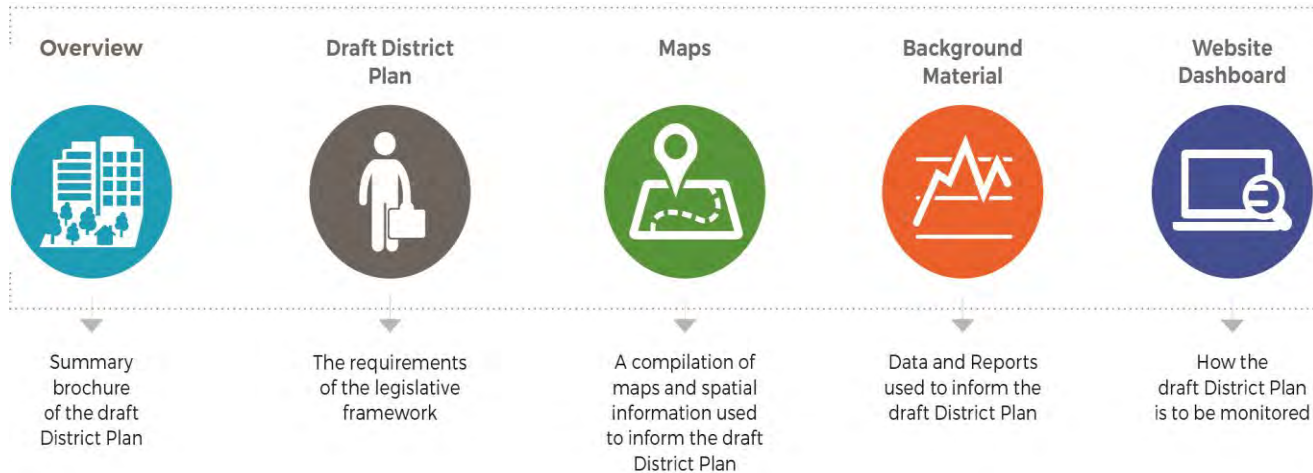


Liveability

Chief Executive Officer

Sarah Hill

District Plans



SEPARATE DOCUMENT

Our Vision
Towards our
Greater Sydney
2056

A draft
amendment to
update *A Plan for
Growing Sydney*

Priorities and actions



Existing
actions



Our actions



New
collaborations



NSW
Government
actions

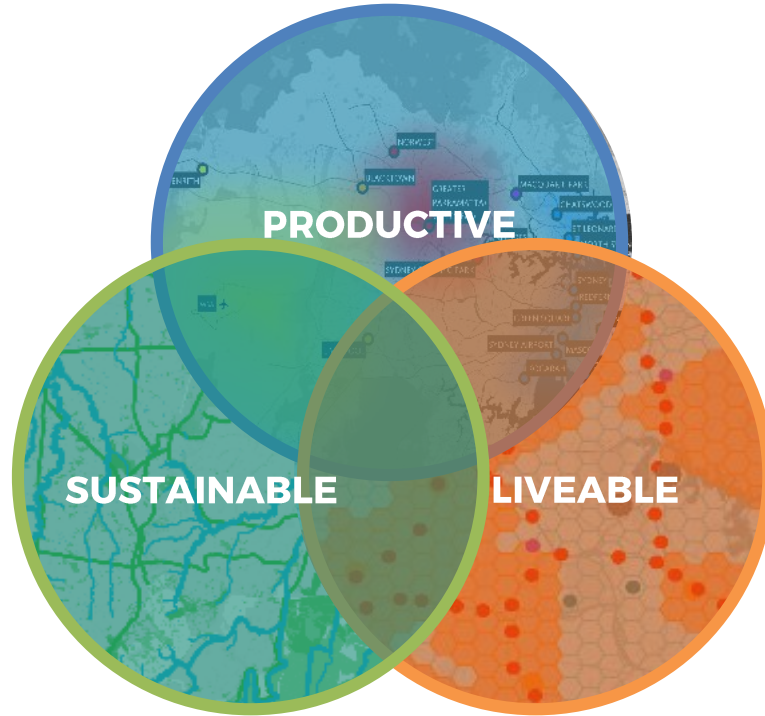


Planning
Priorities



Collaboration
areas

The big issues



Productivity

- Centres and jobs targets
- 30-minute city
- Employment and urban services lands

Sustainability

- Blue and Green Grid
- Protecting the Metropolitan Rural Area
- Urban efficiency and resilience

Liveability

- 5 year and 20 year housing targets
- Affordable Rental Housing Target
- Creating great places

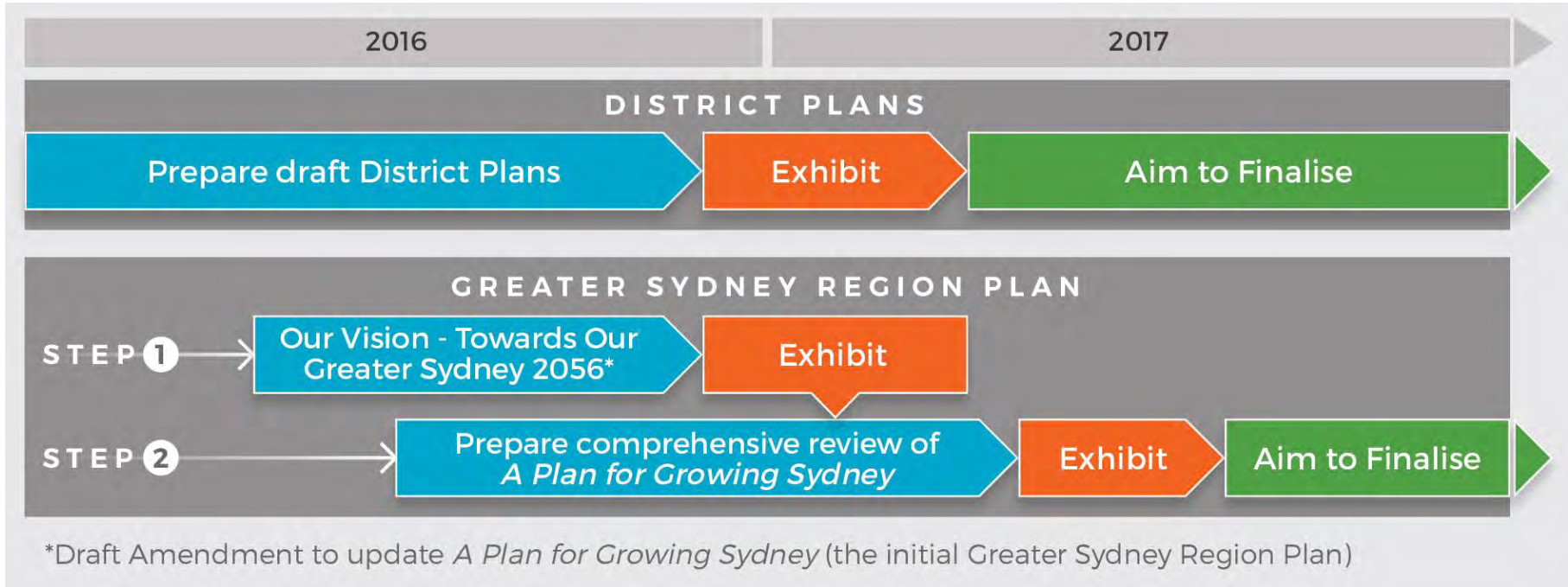
Draft District Plan status

Two key roles:

- Inform Local Environment Plans (once final)
- Consideration for planning proposals (draft)

APfGS Amendment – no statutory weight

Engagement



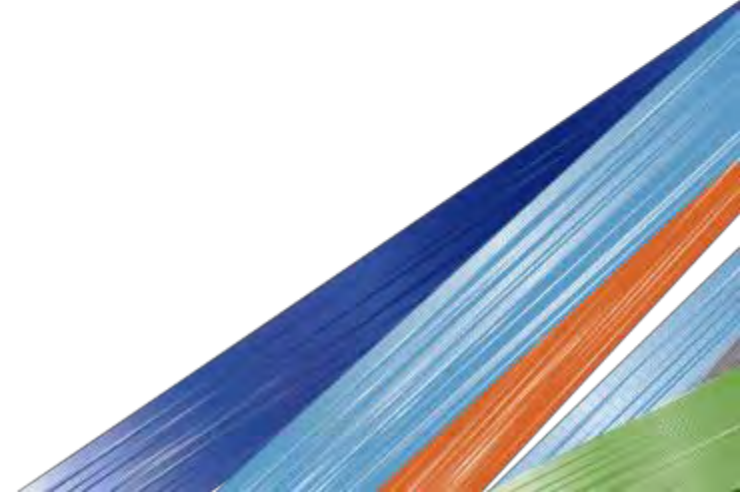
Central District Commissioner

Maria Atkinson



District Plans

What it means for Central District?





Growing jobs in centres


- Forecast 278,600 additional by 2036
- Set job targets for strategic and district centres
- Retain land for employment and urban services



Innovation



Nighttime Economy

A photograph of a two-story residential building with a balcony. Laundry is hanging on the balcony. A tree is in front of the building. A woman is pushing a stroller on the street. Three recycling bins are on the right. The text 'Address housing diversity and affordability' is overlaid on the image.

Address housing diversity and affordability

- Affordable rental housing target
- Support diversity and social housing

New housing targets 2016-2021

Total 46,550

Bayside – 10,150

Burwood – 2,600

Canada Bay – 2,150

Inner West – 5,900

Randwick – 2,250

Strathfield – 3,650

Sydney – 18,300

Waverley – 1,250

Woollahra – 300

p92

GSC identify opportunities to deliver 20 year housing targets



A sustainable District

- Deliver Sydney's Green Grid
- Increase Tree Canopy
- Achieve Zero Carbon by 2050
- Green the Grey Grid
- Improve Water Quality



Lifestyle

Liveability





Sport and Recreation



Arts & Culture



Community

Get involved

 /greatersydneycommission

 #greatersydney

 /greatersydneycommission

 /greater-sydney-commission

 www.greater.sydney

engagement@gsc.nsw.gov.au

1800 617 681



Chief Commissioner

Lucy Hughes Turnbull AO