

# Draft West Central District Plan Overview

November 2016



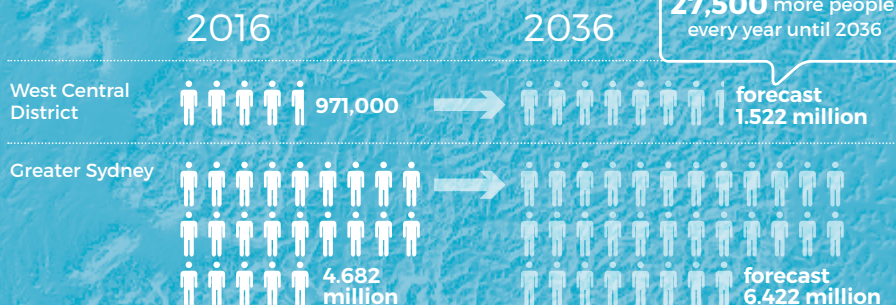
## Local Government Areas:

Blacktown  
Cumberland  
Parramatta  
The Hills



# Snapshot of the West Central District

## Population

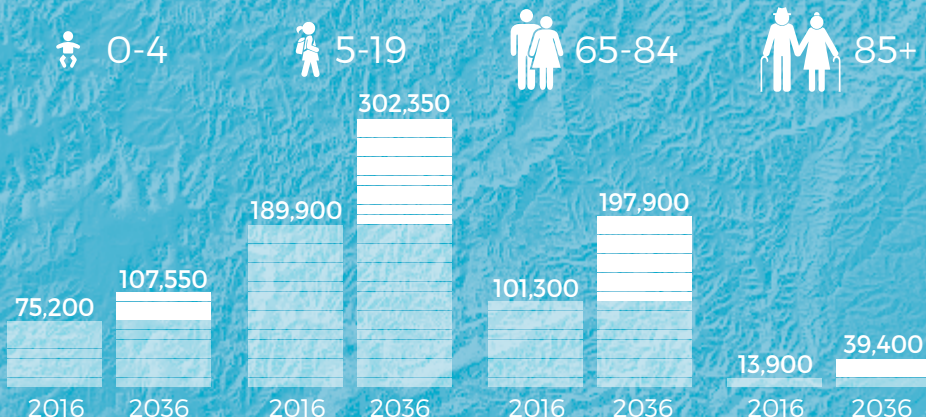


Up to **45%** of residents speak a **language other than English** at home, higher than the Greater Sydney average of 37%



**440,300 jobs**  
which is 18%  
of Greater Sydney's jobs

## Growth by Key Age Groups



There will be **nearly triple** the number of people aged **over 85 years** in the **next 20 years**

# The West Central District Plan

**The West Central is a District of rapidly growing retail and employment centres that service vibrant multicultural communities located close to a rich network of regional parks, waterways and scenic rural beauty.**

The draft West Central District Plan maps our 20-year vision for the West Central District of Greater Sydney.

The draft West Central District Plan is one of six draft District Plans developed by the Greater Sydney Commission for each of Sydney's Districts. We were established by the NSW Government in 2016 to do the big picture planning for Greater Sydney. The District Commissioner for the West Central District is Professor Edward Blakely.

This overview summarises the draft West Central District Plan and asks you for your thoughts and ideas. You can read the entire draft Plan at [www.greater.sydney](http://www.greater.sydney) and send feedback:

- via the website
- by email:  
[engagement@gsc.nsw.gov.au](mailto:engagement@gsc.nsw.gov.au)
- by post:  
Greater Sydney Commission  
Draft West Central District Plan  
PO Box 257, Parramatta NSW 2124.

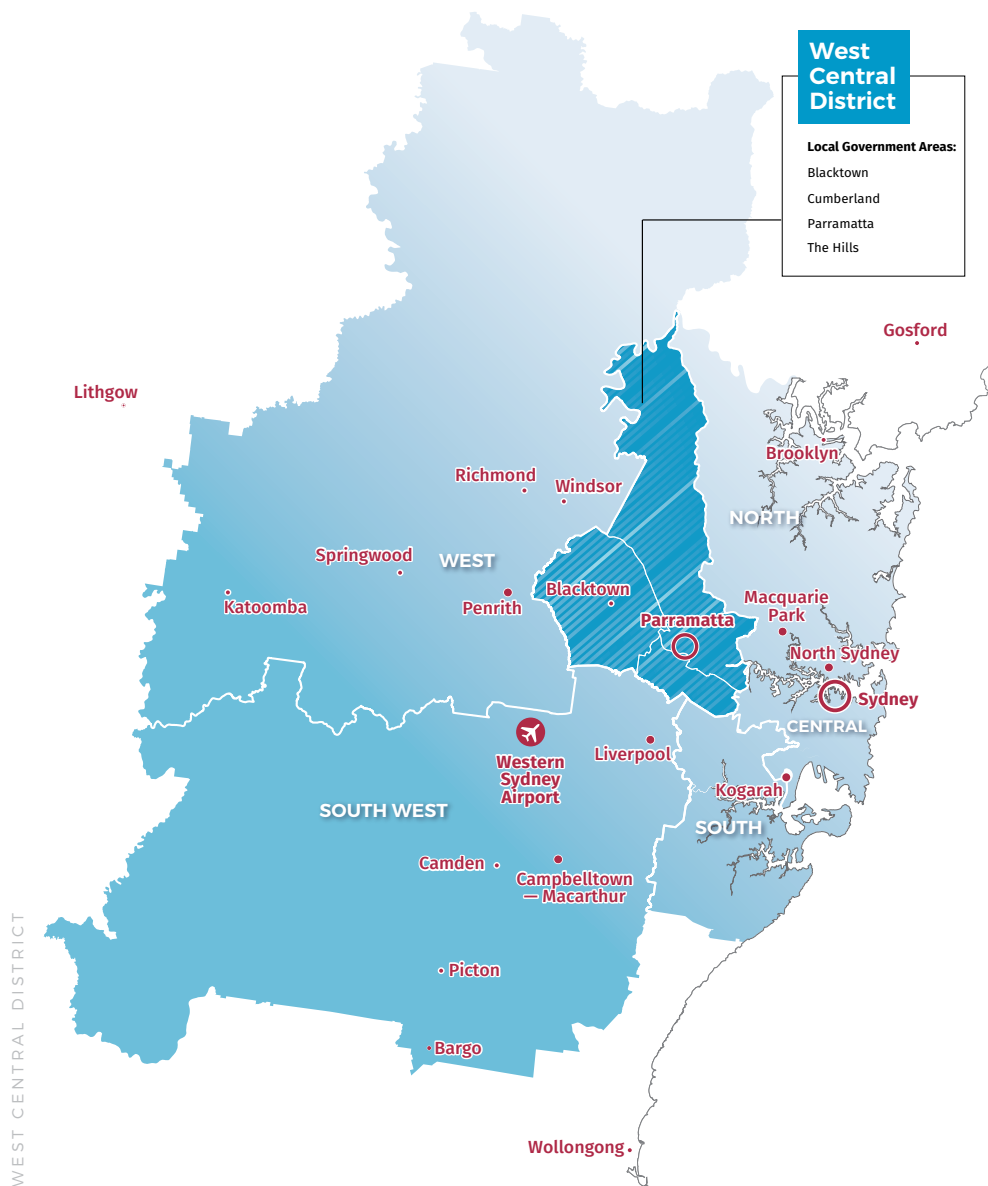
We want to work with you to understand what is important and to give everyone an opportunity to play an active role in shaping the future of the West Central District.

Planning in Greater Sydney traditionally happened at two levels: The NSW Government developed overarching plans that considered the city's growing population, including what kind of jobs and transport people will need. Local government developed local environmental plans to identify how land can be used, including housing, business and parks.

We're now bridging this gap with district-level planning that connects local planning with the longer-term metropolitan planning for Greater Sydney.



## Map of Greater Sydney



# Our vision for the West Central District

**The West Central District is one of the most dynamic and rapidly growing regions in Australia. This District plays a pivotal role in Greater Sydney's future as an economic and employment powerhouse, a core hub for transport and services and the home of vibrant and diverse centres and communities. It will be at the core of Greater Sydney's 'Central City'.**

Over the next 20 years, the West Central District's population growth will see the District – as the fastest growing location in Greater Sydney and Australia. It will lead the transformation of the Greater Sydney and national economy from industrial to innovation technologies and techniques.

The burgeoning area known as Greater Parramatta and the Olympic Peninsula (GPOP) – a place with such great potential will sit at the District's and Greater Sydney's heart. We have prioritised preparing a vision for it in our first year.

With the planned investment in Sydney Metro Northwest, Sydney Metro West and the Parramatta Light Rail, our planning will capture the exciting new opportunities generated by this intensive growth and change to build a more connected and equitable West Central District.

GPOP will consolidate its place at Greater Sydney's heart, with better public transport, cultural and sporting facilities and a knowledge-intensive, services oriented economy. It will be supported by vibrant centres at Blacktown, Castle Hill, Epping, Marsden Park, Merrylands, Mount Druitt, Norwest and Rouse Hill.

Blacktown, Cumberland, Parramatta and The Hills local government areas will each draw on their unique social and economic characteristics anchored in bio-health

and lifestyle, while combining to create a tapestry of emerging innovative economic engines, bolstered by one of Australia's youngest and most diverse populations.

Sydney Olympic Park will be transformed into a healthy lifestyle education and innovation centre based on its sports heritage with vital education, commercial and residential hubs. Parramatta City will emerge on the banks of the Parramatta River, with a combined education and medical super precinct and one of the largest national bio-medical complex as its anchor.

## Aboriginal heritage within the West Central District

The District is rich in Aboriginal heritage and sites of Aboriginal significance marking a connection with the land going back approximately 30,000 years. Evidence of this history is found in the Parramatta Sand Sheet, a layered geological feature that holds artefacts thousands of years old. Other known signs of early Aboriginal occupation can be found at Parramatta Park, an early point of contact between Aboriginal Australians and white settlers.



The area's advanced technology clusters could expand to capture global markets. The District's networks of regional parks, large waterways and scenic rural beauty will continue to provide real lifestyle benefits and attract outdoor and adventure

entertainment. From new communities in the North West Priority Growth Area, to traditional industrial areas and existing lower density suburbs, the West Central District will be a place of energy, diversity and change.

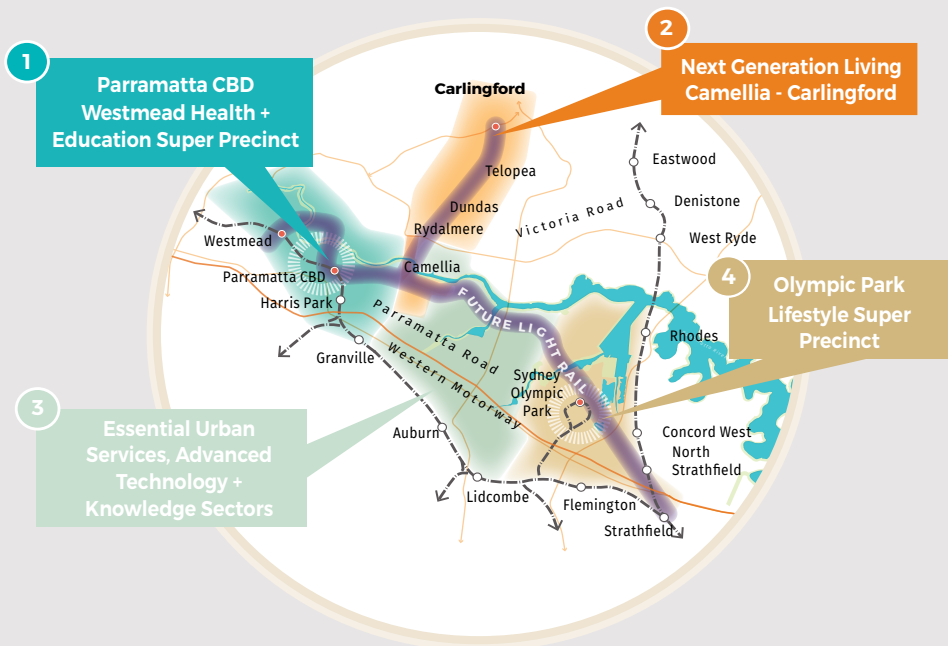
### Greater Parramatta and the Olympic Peninsula (GPOP)

GPOP is a Priority Growth Area within the West Central District covering 4,000 hectares spanning 13km east-west from Strathfield to Westmead, and 7km north-south from Carlingford to Lidcombe and Granville.

GPOP has a strong foundation and great assets: it has space and size, diverse economic activity, good infrastructure, a rich history and great civic assets. The four distinct GPOP quarters are shown below.

We have collaborated with key partner agencies, the City of Parramatta Council, institutions and businesses throughout 2016. We have also been out and about listening and speaking to the community about their aspirations for GPOP.

The release of the draft GPOP vision prior to the draft West Central District Plan reflects its importance in delivering a productive, liveable and sustainable Greater Sydney over the next 20 years and beyond.



# Achieving the vision – Our priorities

To achieve this vision for the West Central District, the draft Plan sets out our priorities and actions that will shape the District's future and guide policy decisions.



## Support and deliver the GPOP vision

Greater Parramatta's role as Greater Sydney's Central City will become more significant with the targeted growth of innovative industries that will attract more government and private sector jobs. We will support the GPOP vision, and the delivery of major infrastructure and transport projects, including the Parramatta Light Rail and Sydney Metro West will create a modern, interlinked District.



## Encourage employment growth

We want to grow smart jobs in the District, and develop health and education activities in Westmead. We will focus on facilitating the growth and diversification of new industries in this exciting, knowledge-intensive space and upskill traditional manufacturers to become suppliers and service providers. We want to also protect employment and urban services land to ensure the continued strength of the District's strong manufacturing sector.



## Create a more connected District

Improving transport links between the District's diverse economic centres and Parramatta will enhance business-to-business interaction, supply chains and workforce mobility. The delivery of the Sydney Metro Northwest rapid transit system and dedicated routes to make walking and cycling easier will create an interconnected network of business and employment hubs. We will aim to integrate the provision of transport with land use planning.



## Improve housing design and diversity

We want to provide a choice of affordable, well-designed housing that will suit a range of different needs and accommodate a growing and ageing population. We also want to transition away from areas of high social housing concentration and create more diverse neighbourhoods, with a blend of public and private housing. We will also monitor housing outcomes and partner population growth with infrastructure planning.



### Design vibrant and active centres

We want to create bright and attractive centres that people can access within 30 minutes. Encouraging healthy and active lifestyles by making it easier for people to walk and cycle will support this priority. At the same time, preserving the character and unique lifestyle attractions of the rural-urban areas and green spaces will be important in providing high quality urban design.



### Provide communities with better services

Better planning and coordination of community infrastructure such as schools, public places, open spaces, water, sewerage, power, roads and waste management will result in services being delivered when and where communities need them. We will facilitate smarter collaboration between local and state government to streamline the delivery of essential infrastructure to assist in accommodating growth and changing demographics.



### Showcase the Western Sydney Parklands

The Western Sydney Parklands cover a 27km corridor that traverses three local government areas. We will cultivate this green asset, ensuring good access for all residents. We will support its enhancement through the development of the Western Sydney Zoo, Blacktown International Sportspark and recreational facilities at Prospect Reservoir.



### Improve access and health of waterways

Protecting the waterway health and surrounding environment and biodiversity of the District's three river systems – the Georges, Hawkesbury-Nepean and Parramatta – will be a key priority as the District grows. We want to enhance access to the District's waterways for the people of the West Central District.



### Manage growth with eco-friendly planning

We will look for innovative ways to reduce the District's carbon footprint and harness new technology to manage resources, energy and waste more efficiently. We will also plan effective ways to lessen any impact of the District's rural activities on noise, odour and air quality.

## Culture and heritage within the West Central District

Evidence of European settlement and agriculture is evident in places like the justice precinct in Parramatta, Bella Vista Farm, Old Government House and Rouse Hill House. Some examples of the District's cultural facilities include Parramatta Riverside Theatres, Blacktown Art Prize, Western Sydney Dance Action, and the diverse cultural cuisines and food outlets in Harris Park and Parramatta.



# Our vision for Greater Sydney

The current 20-year planning strategy for Greater Sydney is *A Plan for Growing Sydney*, released by the NSW Government in December 2014. In preparing the draft District Plans, we have considered *A Plan for Growing Sydney* as well as a range of other matters that have generated a major shift in strategic planning for Greater Sydney, and have created a longer term, transformational focus on the regional significance of central and western Sydney. As such, *Towards our Greater Sydney 2056*, with its strategy for a metropolis of three cities is set to provide a framework that can better underpin strategic planning for a more productive, liveable and sustainable city. To read more about this vision or to lodge a formal submission, visit [www.greater.sydney](http://www.greater.sydney).

*Towards our Greater Sydney 2056* captures an ambitious future for a growing Greater Sydney and acts as a bridge between the current and future metropolitan plans that provide the overarching vision for Greater Sydney as a whole. It describes Greater Sydney as:



## **A Productive Greater Sydney** is a

city with more jobs in many centres, with more people being able to access their jobs within 30 minutes of where they live. A Productive Greater Sydney sees new knowledge-intensive jobs in centres right across Greater Sydney's six Districts, and supports investment in digital and knowledge-intensive industries.

It offers a greater choice in places to live, and matches the demand for services with new facilities such as schools, hospitals, child care, aged care and community centres.



## **A Sustainable Greater Sydney** is a

city that continues to exist within a precious landscape, and uses this landscape's environmental integrity as an asset. It focuses on improving the health of Greater Sydney's waterways and enhancing its biodiversity, while also building resilience to natural disasters such as flood and fire that are an inevitable consequence of our landscape and climate. A Sustainable Greater Sydney harnesses technology to unearth innovative ways to minimise our environmental impact.



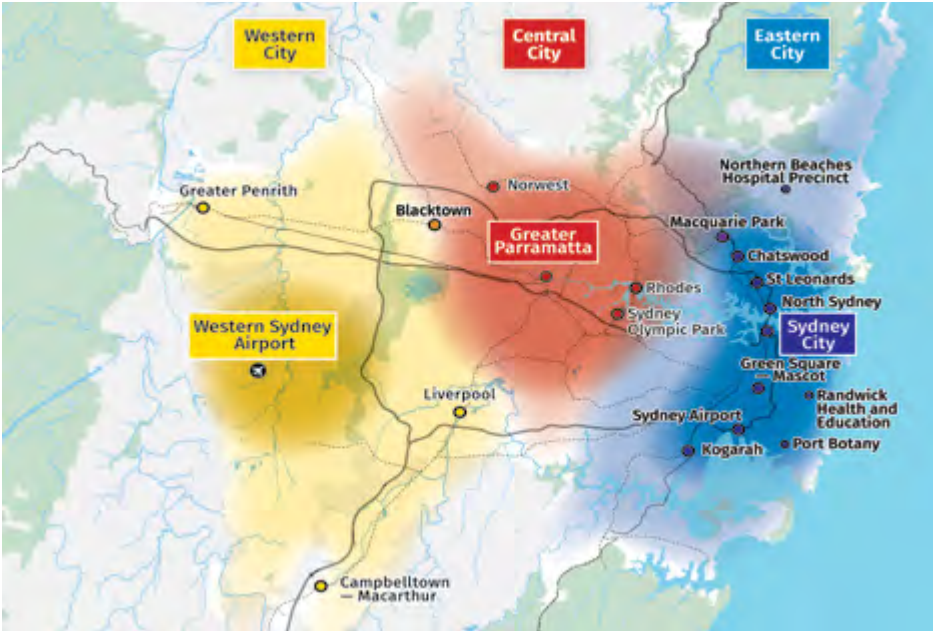
## **A Liveable Greater Sydney** is a city

with many different places that offer the kind of day to day services and experiences that contribute to our health and happiness. A Liveable Greater Sydney places quality of life considerations at the heart of our planning, focusing on better public transport links, and safe and accessible walking and cycling routes.

*Towards our Greater Sydney 2056* tells a story of productivity, liveability and sustainability across three cities that collectively make up Global Sydney. Part of the West Central District shares in the Central City and Western City.

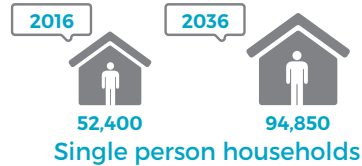
| Western City                                                                                                                                                                                                                                                                                                                                                                                                      | Central City                                                                                                                                                                                                                                                                                                                                                                                                                          | Eastern City                                                                                                                                                                                                                                                            |
|-------------------------------------------------------------------------------------------------------------------------------------------------------------------------------------------------------------------------------------------------------------------------------------------------------------------------------------------------------------------------------------------------------------------|---------------------------------------------------------------------------------------------------------------------------------------------------------------------------------------------------------------------------------------------------------------------------------------------------------------------------------------------------------------------------------------------------------------------------------------|-------------------------------------------------------------------------------------------------------------------------------------------------------------------------------------------------------------------------------------------------------------------------|
| <p>Encompassing the economic area that will evolve with the development of Western Sydney Airport, an emerging centre of connectivity with a focus on freight, transport and logistics. It will also offer the strategic advantage of creating a greater diversity of jobs and greater social opportunities for the many citizens in the centres of Penrith, Blacktown, Liverpool and Campbelltown-Macarthur.</p> | <p>Concentrated on the developing job hubs of the Greater Parramatta area, with a foundation in health and education, advanced manufacturing, innovation driven enterprises as well as urban services and Greater Parramatta being the administrative and business centre for Greater Sydney. Strong transport capacity and connections to the Eastern City and Western City will be crucial for the success of the Central City.</p> | <p>Clustered around Sydney City, extending from Macquarie Park to Kogarah, with established strength in service industries, finance and innovation, and connected to Sydney Airport, Port Botany and Education, the established Eastern City will continue to grow.</p> |

### Plan of Greater Sydney's Three Cities



# More about the West Central District

There will be **42,450 more people living alone** over the **next 20 years**, which will be the fastest growing household type between 2016 and 2036

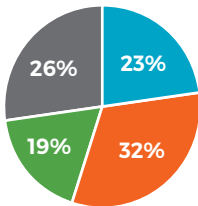


**70%** of homes in the West Central District are **detached** compared to 57% across Greater Sydney

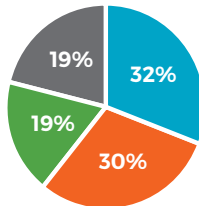


## Jobs in 2016

West Central District



Greater Sydney



Knowledge and professional services



Population serving sectors



Health and education



Industrial

**18%** of residents have a **bachelor degree** compared to the Greater Sydney average of **20%**



**Public open space** makes up **13%** of the West Central District and **56%** of Greater Sydney

# Your feedback on our Plan

## #GreaterSydney: Insights from the community

Our conversations with the community through the #GreaterSydney engagement program have provided valuable insights into what the community values about the West Central District and what people want to see changed. We have sought to encapsulate these inputs in the draft West Central District Plan. You can read the full draft West Central District Plan at [www.greater.sydney](http://www.greater.sydney).

People in the West Central District told us they want more jobs, diverse training and employment opportunities closer to home and greater support is required for culturally and linguistically diverse residents to access appropriate employment.

People want improved public transport and better connections to service more remote communities.

People want affordable housing to address the current lack of affordability. Public safety initiatives such as increased policing are also required.

Quality open space areas are required to support active and passive recreation and people consider protection of our natural environment as critical to supporting healthy lifestyles.

We are inviting your feedback, in response to the draft West Central District Plan, and encourage you to help us plan together for the future of the West Central District.

To find out how to get involved or lodge a formal submission, visit [www.greater.sydney](http://www.greater.sydney).

- Join the conversation



Facebook  
[/greatersydneycommission](https://www.facebook.com/greatersydneycommission)



Twitter  
[#greatersydney](https://twitter.com/greatersydney)



LinkedIn  
[/greater-sydney-commission](https://www.linkedin.com/company/greater-sydney-commission)



Instagram  
[/greatersydneycommission](https://www.instagram.com/greatersydneycommission)

- Call us on 1800 617 681



Auburn #GreaterSydney  
Photo Competition  
Photo Credit: Angela Le