

Draft Central District Plan Overview

November 2016

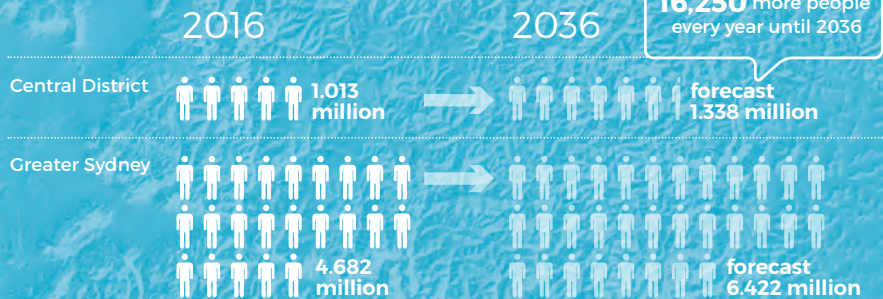


Local Government Areas:

Bayside	Inner West	The City of Sydney
Burwood	Randwick	Waverley
Canada Bay	Strathfield	Woollahra

Snapshot of the Central District

Population



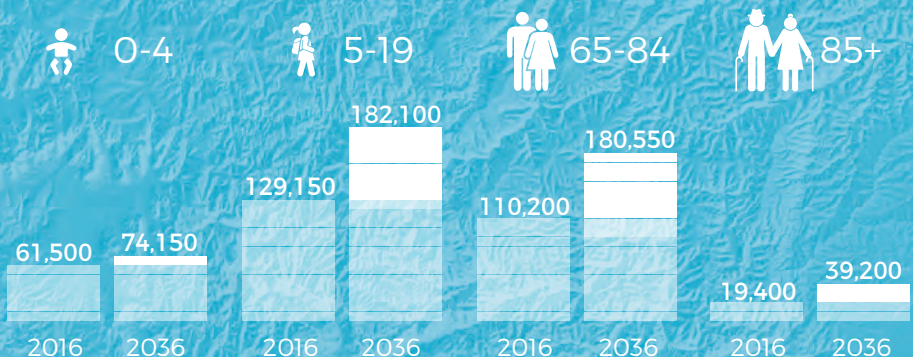
Just over half of the population
**currently live in
apartments**

Up to **37%** of residents

speaking a **language other than English** at home,
which is in line with the average across Greater Sydney



Growth by Key Age Groups



There will be over **double** the number of people **over 85 years** in the **next 20 years**

The Central District Plan

The Central District is the powerhouse of Greater Sydney and a focal point for jobs, business and financial activity. It is a District of great natural beauty, rich in lifestyle, cultural and recreational attractions and including a blend of fast-paced centres, cosmopolitan urban communities and village-like heritage neighbourhoods.

The draft Central District Plan maps our 20-year vision for the Central District of Greater Sydney.

The draft Central District Plan is one of six draft District Plans developed by the Greater Sydney Commission for each of Sydney's Districts. We were established by the NSW Government in 2016 to do the big picture planning for Greater Sydney. The District Commissioner for the Central District is Maria Atkinson.

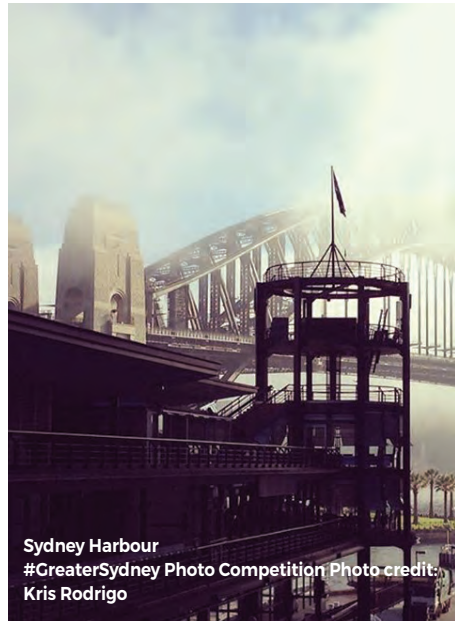
This overview summarises the draft Central District Plan and asks you for your thoughts and ideas. You can read the entire draft Plan at www.greater.sydney and send feedback:

- via the website
- by email:
engagement@gsc.nsw.gov.au
- by post:
Greater Sydney Commission
Draft Central District Plan
PO Box 257, Parramatta NSW 2124.

We want to work with you to understand what is important and to give everyone an opportunity to play an active role in shaping the future of the Central District.

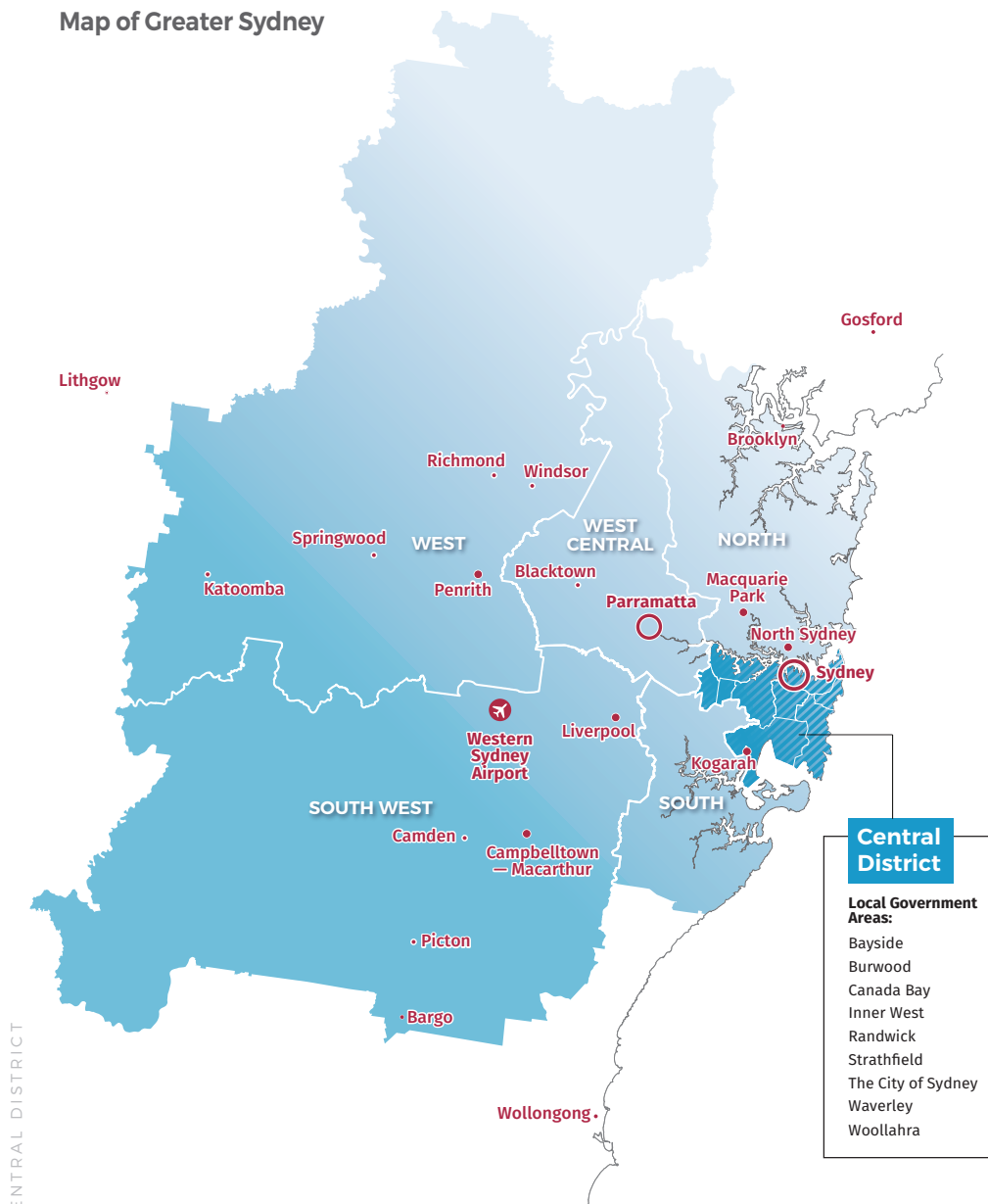
Planning in Greater Sydney traditionally happened at two levels: The NSW Government developed overarching plans that considered the city's growing population, including what kind of jobs and transport people will need. Local government developed local environmental plans to identify how land can be used, including housing, business and parks.

We're now bridging this gap with district-level planning that connects local planning with the longer-term metropolitan planning for Greater Sydney.



Sydney Harbour
#CreateSydney Photo Competition Photo credit:
Kris Rodrigo

Map of Greater Sydney



Our vision for the Central District

Home to a globally competitive Sydney City and liveable neighbourhoods, the Central District comprises natural attractions and iconic built places including Sydney Harbour, the east coast beaches, parks and rivers. Its cosmopolitan and vibrant urban communities range from the highest density suburbs in Australia to some quintessential historic neighbourhoods.

By 2036, our vision is for the Central District to be a global sustainability leader, managing growth while maintaining and enhancing the District's liveability, productivity and attractiveness for residents and visitors.

It will remain an attractive place to live, with an increased diversity of housing choices that cater for all groups including people who live on their own, older residents and families. Growth and development will allow improvements to public areas and better walking, cycling and public transport connections across the District. Cultural and environmental heritage will be celebrated.

Better east to west connections will come with the integration of major transport projects. The District's many centres and key places will be enlivened, with facilities and services that support vibrant day and night activities. Our planning will celebrate the District's Aboriginal heritage. We will foster diversity and build on the natural and cultural features.

By 2036, the Central District will be a model of sustainable planning and development.

Transport networks will support the efficient movement of goods and services into and across the District, building on the Sydney Metro Northwest, Sydney Metro City & Southwest and the CBD and South East Light Rail.

Aboriginal heritage within the Central District

The Central District stretches across the traditional lands of Sydney's Gadigal coastal dwellers. It also incorporates territory occupied by the Darug, who occupied the inland areas west of the Blue Mountains. Among the many clan groups and tribes who are part of this rich story are the Bideagal, Boroegal and Wangal.

Places of contemporary and historic Aboriginal significance are dotted across the inner city, including Redfern, and many sites around the Harbour and Sydney City.

Our open space and centres will be better connected. The quality of the District's waterways will be improved, and green connections will extend to the coast, along the Harbour and to rivers – adding spaces to enhance movement, sports and biodiversity. The District will develop better ways to mitigate the impacts of climate change on our key infrastructure and assets.

Improvements across the District will strengthen global competitiveness, increase productivity and continue to provide a high quality of life for residents. We will support and grow knowledge and enterprise precincts within the District, particularly in Randwick, and from the Australian Technology Park through to The Bays Precinct, encompassing North Eveleigh, Chippendale, Camperdown, Ultimo and Pyrmont. These knowledge precincts and the potential links to the four universities – University of NSW, University of Sydney, University of Technology Sydney and the University of Notre Dame Australia - will solidify Australia's position as a leader in innovation. Investment and planning for employment and industrial lands will support local urban services, national and global offerings, and the needs of start-ups, the new creative economy and smart logistics.

- **Committed and planned infrastructure** – increasing access to places within 30 minutes through transport improvements including Sydney Metro Northwest and Sydney Metro City, Sydney Metro West & Southwest, CBD and South East Light Rail and WestConnex.
- **Education and innovation** – planning for the growth and success of education and innovation precincts, including the innovation corridor from White Bay to Australian Technology Park.
- **Walking and cycling** – supporting opportunities to make walking and cycling more convenient for people, safer and enjoyable.
- **Unique heritage** – respecting the District's rich Aboriginal, cultural, environment and built heritage.
- **Natural landscape** – connecting people to open space and protecting the District's beaches, parks and waterways.

Culture and heritage within the Central District

The District's diverse cultural heritage includes public buildings like courthouses and railway stations as well as the Chinese Market Gardens and sites such as Centennial Park. Other examples of heritage include the White Bay Power Station and Sydney Harbour Bridge. Examples of major cultural events include the Biennale of Sydney, Sculpture by the Sea, Sydney Festival, Vivid Sydney and the Mardi Gras.

Achieving the vision – Our priorities

To achieve this vision for the Central District, the draft Plan sets out our priorities and actions that will shape the District's future and guide policy decisions.



Enhance the role of global Sydney

We want to create growth in 'smart' industries and create opportunities for a new generation of workers and reinforce the reputation of Sydney City as a progressive global business and financial hub. Our planning needs to make land and infrastructure available for existing local industry and manufacturing while also providing affordable opportunities for start-ups and new businesses. Our priority will be to enhance opportunities for knowledge-intensive industries located around Camperdown-Ultimo and Randwick Health and Education super precincts. In addition, we want to foster new employment clusters in urban transformation areas like Central to Eveleigh and The Bays Precinct.

Randwick Health and Education super precinct is estimated to include 22,800 jobs in 2016.



Leverage investment in transport infrastructure

Investment such as Sydney Metro City & Southwest, Sydney Metro West and the CBD and South East Light Rail present opportunities to increase connectivity between where we work, live and play with improvements to mass transit, cycling and walking routes. Improved connectivity will help us revitalise employment and cultural opportunities particularly along George Street, Central to Eveleigh and at the Randwick Health and Education super precinct.



Improve freight, logistical and urban services

The proximity of two key international transport gateways in Sydney Airport and Port Botany places pressure on a road and rail network that also serves a dense urban population. We will look at ways to improve the way goods and services are moved in the District and will address conflicts between housing areas and freight traffic.



Plan for demographic change

We want people of all ages to have equitable access to services that support quality of life. With an increase in the proportion of our population being children, aged over 65, and aged over 85, we will help plan for greater housing choice as well as improved schools, tertiary institutions, community, support and health services.



Meet housing demand with innovative solutions

We want people in the Central District to have a range of affordable housing choices and housing types that cater for all groups including key workers, people who live on their own, older residents and families. Providing a wider range of medium-density housing choices and more community housing will help meet the District's housing needs and growth. We will also monitor housing outcomes and partner population growth with infrastructure planning.



Enrich unique places and connections

Our work will include facilitating a network of attractive, liveable centres and community hubs connected by convenient transport links, as well as safe walking and cycling routes, in addition to better connections to the District's many parks, recreational areas, and cultural attractions. We will collaborate across government and with the professional industry to plan and deliver design excellence in our unique places, spaces and buildings in innovative and sustainable ways.



Promote and celebrate cultural diversity

The District's multicultural fabric and significant Aboriginal heritage offers rich opportunities to celebrate diversity, promote cultural cohesion and create tourism opportunities. We will support the continued development of festivals, events and places that showcase our diverse communities through food, music and culture. We want to create spaces and opportunities for the exchange and interaction of ideas, such as multi-purposing under-utilised industrial lands, providing spaces for art and activating the night time economy.



Protect the environment and enhance sustainability

Our planning needs to deliver and improve healthy waterways, protect biodiversity and promote greening initiatives that increase tree canopy cover along the District's streets to help mitigate the urban heat island effect. We will prioritise monitoring of water quality, waste management, improving connections between green spaces and enhancing public access to and along valuable foreshore including Sydney Harbour.

We will partner across government to implement best practice mechanisms to meet environmental performance, efficiency targets and benchmarks for the District and Greater Sydney. We will work with the City of Sydney and 100 Resilient Cities in improving resilience to natural hazards and climate change within the District and across Greater Sydney.

Our vision for Greater Sydney

The current 20-year planning strategy for Greater Sydney is *A Plan for Growing Sydney*, released by the NSW Government in December 2014. In preparing the draft District Plans, we have considered *A Plan for Growing Sydney* as well as a range of other matters that have generated a major shift in strategic planning for Greater Sydney, and have created a longer term, transformational focus on the regional significance of central and western Sydney. As such, *Towards our Greater Sydney 2056*, with its strategy for a metropolis of three cities is set to provide a framework that can better underpin strategic planning for a more productive, liveable and sustainable city. To read more about this vision or to lodge a formal submission, visit www.greater.sydney.

Towards our Greater Sydney 2056 captures an ambitious future for a growing Greater Sydney and acts as a bridge between the current and future metropolitan plans that provide the overarching vision for Greater Sydney as a whole. It describes Greater Sydney as:



A Productive Greater Sydney is a

city with more jobs in many centres, with more people being able to access their jobs within 30 minutes of where they live. A Productive Greater Sydney sees new knowledge-intensive jobs in centres right across Greater Sydney's six Districts, and supports investment in digital and knowledge-intensive industries.



A Liveable Greater Sydney is a city

with many different places that offer the kind of day to day services and experiences that contribute to our health and happiness. A Liveable Greater Sydney places quality of life considerations at the heart of our planning, focusing on better public transport links, and safe and accessible walking and cycling routes. It offers a greater choice in places to live, and matches the demand for services with new facilities such as schools, hospitals, child care, aged care and community centres.



A Sustainable Greater Sydney is a

city that continues to exist within a precious landscape, and uses this landscape's environmental integrity as an asset. It focuses on improving the health of Greater Sydney's waterways and enhancing its biodiversity, while also building resilience to natural disasters such as flood and fire that are an inevitable consequence of our landscape and climate. A Sustainable Greater Sydney harnesses technology to unearth innovative ways to minimise our environmental impact.

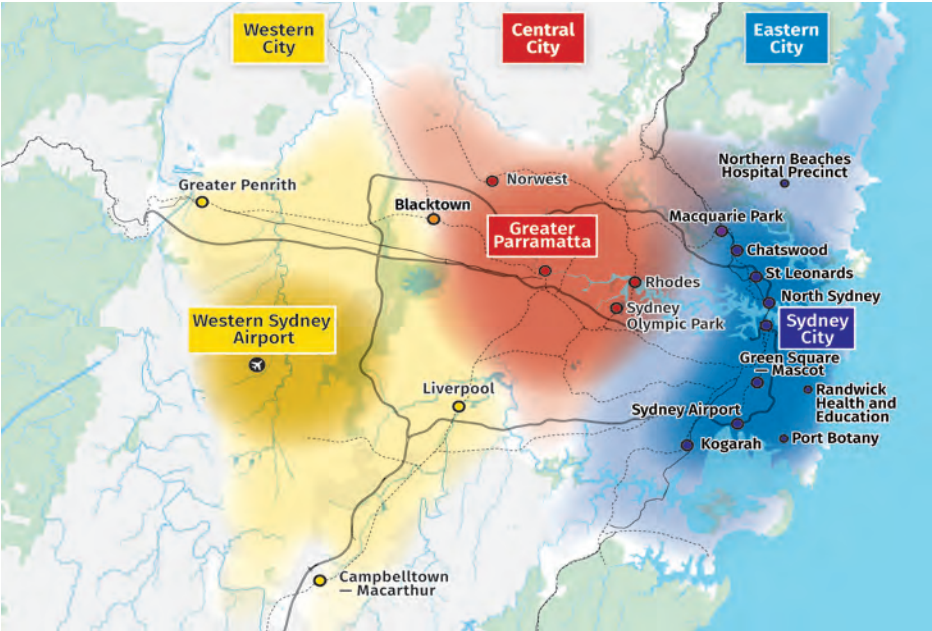


St Peters #GreaterSydney Photo Competition
Photo credit: Neil

Towards our Greater Sydney 2056 tells a story of productivity, liveability and sustainability across three cities that collectively make up Global Sydney. The Central District shares part of the Eastern City and the Central City.

Western City	Central City	Eastern City
<p>Encompassing the economic area that will evolve with the development of Western Sydney Airport, an emerging centre of connectivity with a focus on freight, transport and logistics. It will also offer the strategic advantage of creating a greater diversity of jobs and greater social opportunities for the many citizens in the centres of Penrith, Blacktown, Liverpool and Campbelltown-Macarthur.</p>	<p>Concentrated on the developing job hubs of the Greater Parramatta area, with a foundation in health and education, advanced manufacturing, innovation driven enterprises as well as urban services and Greater Parramatta being the administrative and business centre for Greater Sydney. Strong transport capacity and connections to the Eastern City and Western City will be crucial for the success of the Central City.</p>	<p>Clustered around Sydney City, extending from Macquarie Park to Kogarah, with established strength in service industries, finance and innovation, and connected to Sydney Airport, Port Botany and Randwick Health and Education, the established Eastern City will continue to grow.</p>

Plan of Greater Sydney's Three Cities



More about the Central District

904,500 jobs
which is 37% of Greater Sydney's jobs



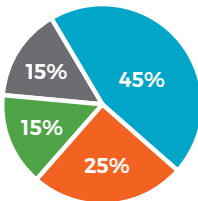
There will be **61,100 more people living alone** over the **next 20 years**, which will be the fastest growing household type between 2016 and 2036



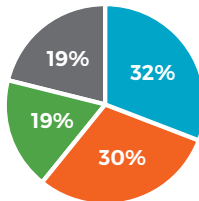
30% of trips to work are by **train, bus or ferry** – the highest of any District within Greater Sydney

Jobs in 2016

Central District



Greater Sydney



Knowledge and professional services



Population serving sectors



Health and education



Industrial

27% of residents have a **bachelor degree** higher than the Greater Sydney average of 20%



Your feedback on our Plan

#GreaterSydney: Insights from the community

Our conversations with the community through the #GreaterSydney engagement program have provided valuable insights into what the community values about the Central District and what people want to see changed. We have sought to encapsulate these inputs in the draft Central District Plan. You can read the full draft Central District Plan at www.greater.sydney.

The feedback highlighted strong support to expand transport to provide better connections between the eastern suburbs and inner west as well as improve access to Sydney City and the beaches. Suggestions include improving the cycle network and introducing initiatives to reduce car ownership as a means of reducing traffic congestion.

More affordable housing is required and any new development should reflect the character of the local area. Improved schools and child care centres are required to support the growing population.

More open space is required and for land to be retained close to Sydney for manufacturing and food production to sustain the city's population into the future.

We are inviting your feedback, in response to the draft Central District Plan, and encourage you to help us plan together for the future of the Central District.

To find out how to get involved or lodge a formal submission, visit www.greater.sydney.

- Join the conversation



Facebook
[/greatersydneycommission](https://www.facebook.com/greatersydneycommission)



Twitter
[#greatersydney](https://twitter.com/greatersydney)



LinkedIn
[/greater-sydney-commission](https://www.linkedin.com/company/greater-sydney-commission)



Instagram
[/greatersydneycommission](https://www.instagram.com/greatersydneycommission)

- Call us on 1800 617 681



Bondi #GreaterSydney Photo Competition
Photo credit: Jessica Hoskins